

ESS LINK

Operation Introduction

ESS LINK Operation Introduction

Catalog

1 ESS LINK Introduction	4
1.1 Software Download	4
1.2 Register Account and Bind Device	5
1.2.1 Register Account	5
1.2.2 Online network distribution	7
1.2.3 Offline Mode Bluetooth Inverter Distribution Networks	9
1.3 Home page Interface	12
2 Setting Parameters in Online Mode	12
2.1 Setting the Date	14
2.2 Setting the Operating Mode	14
2.3 Host Advanced Settings (not open to end users)	17
2.4 View Data	17
2.4.1 Alarm Information	17
2.4.2 Power Generation Statistics	18
2.4.3 Photovoltaic and Battery Status	19
2.4.4 System Data	19
2.5 Inverter debugging and setup	20
2.5.1 Set the anti-reverse flow function	20
2.5.2 Network protection, power quality response mode and other Settings	21
2.5.3 View inverter firmware version	21
3 Offline Mode	23
3.1 Offline Mode Operations	23
3.2 Advanced Parameter Setting Operations	25
3.2.1 Setting the date	25
3.2.2 Setting the Operating Mode	26
3.2.3 Host Advanced Settings (not open to end users)	30
3.3 View Data	31
3.3.1 Alarm Information	31
3.3.2 Power Generation Statistics	31
3.3.3 Photovoltaic and Battery Status	32

ESS LINK Operation Introduction

3.3.4 System Data	32
3.3.5 Language Settings	34

ESS LINK Operation Introduction

1 ESS LINK Introduction

ESS LINK is a mobile application that can communicate with the inverter via WiFi. The following are the commonly used functions:

- Monitor the system data, alarm information, and software version of the inverter.
- Setting the parameters of the inverter
- Maintenance equipment.

The initial flowchart of the App operation is shown below:

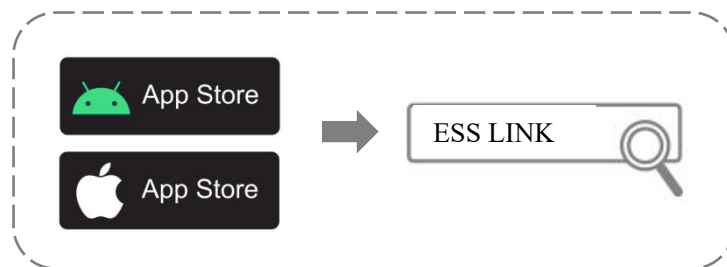


1.1 Software Download

Method 1: Users can scan the QR code below to download and install according to their phone model.



Method 2: Search ESS LINK in **Google Play** (Android) or **App Store** (IOS) to download and install.



Note: After the installation of ESS LINK is completed, if there is a subsequent version update, a prompt for the new version update will

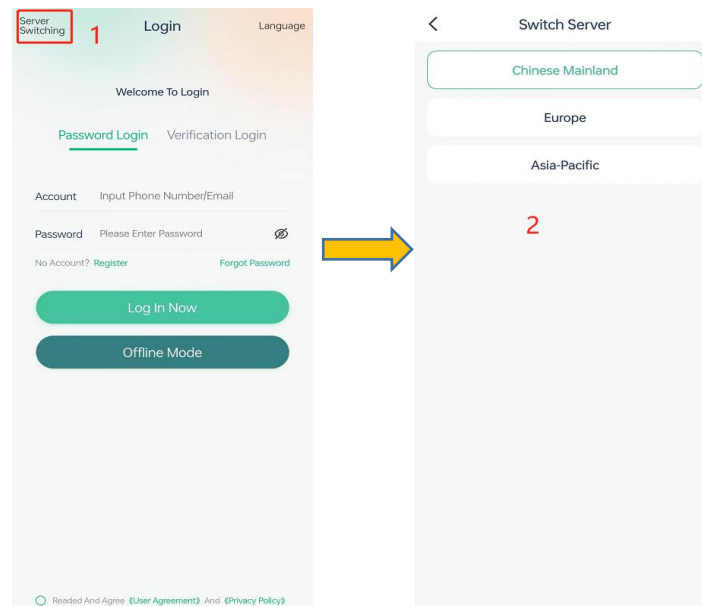
ESS LINK Operation Introduction

appear when you enter the home page of the app (IOS users can only download the update through the APP Store).

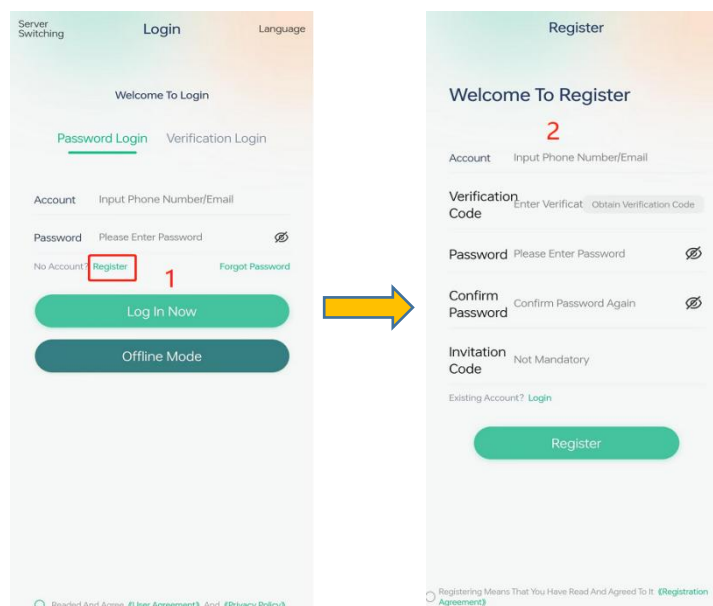
1.2 Register Account and Bind Device

1.2.1 Register Account

Step 1: Click App icon > Server Switching. Enter the login interface, you can choose the server in the upper left corner, Choose a server that is close to the geographic location of the installed inverter, and the upper right corner of the switching language, you can choose the **language**.

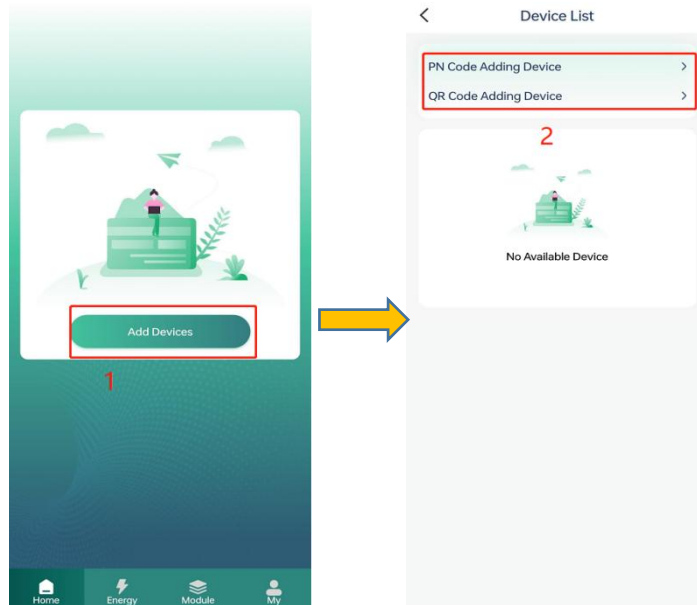


Step 2: Register> Enter your cell phone number/email> Verify code> Set password> Register, as follows:



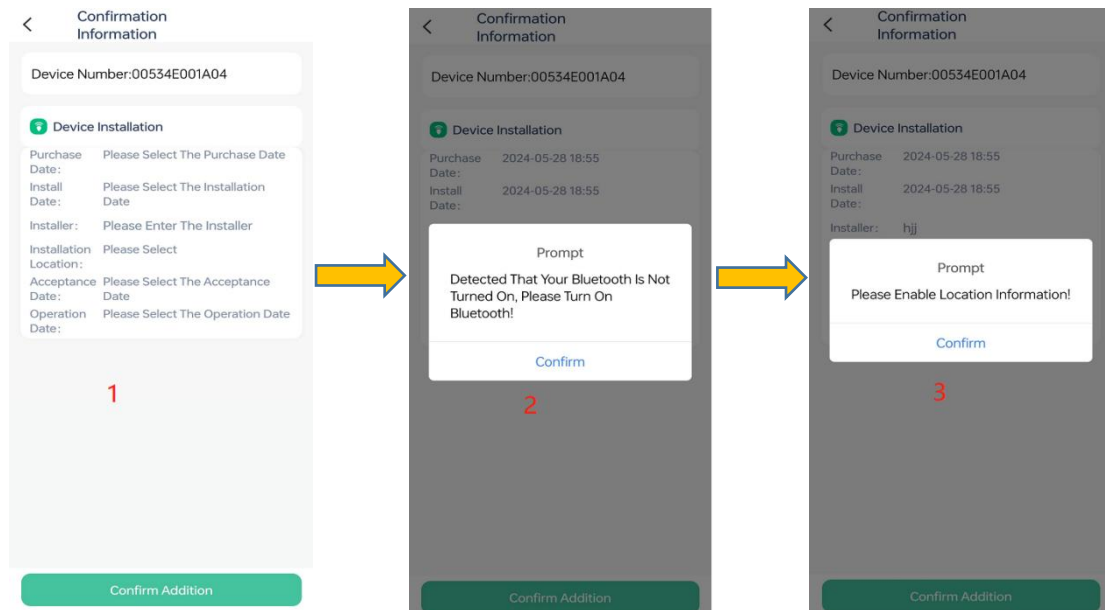
ESS LINK Operation Introduction

Step 3: After logging in to the account and entering the first interface, users need to scan the QR code on the WiFi Stick (single-phase off-grid inverter to scan the QR code on the inverter) or manually enter the PIN code on the WiFi Stick to bind the device, **click Add Devices > QR Code to Add Device / PIN Code to Add Device.**



After successful scanning, the inverter information will be recognized, fill in the inverter installation information, after filling in, point Confirm to add, and the App will prompt to open the phone Bluetooth and location information, please open (Android users please open WiFi).

ESS LINK Operation Introduction



1.2.2 Online network distribution

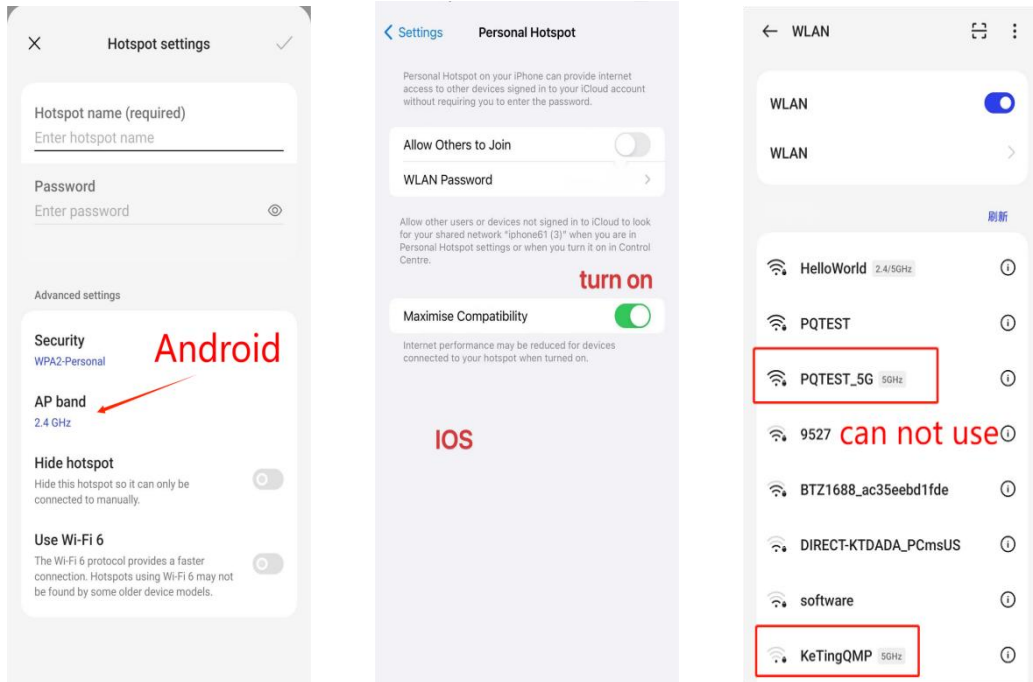
Note: If it's a 4G communication stick then just click cancel when the prompt window pops up.

The Android device will automatically pop up the Bluetooth mating window (user need to turn on the cell phone Bluetooth, positioning and Wi-Fi in advance), after the cell phone device connects to the Wi-Fi successfully, the user selects the home WiFi name and enters the password.

(IOS devices if not pop-up, **click on My > Bluetooth with network**) (if custom WIFI name and password, users need to use the phone to manually open the corresponding hotspot,, Apple users need to open the **maximum compatibility**, hotspot settings are shown below).

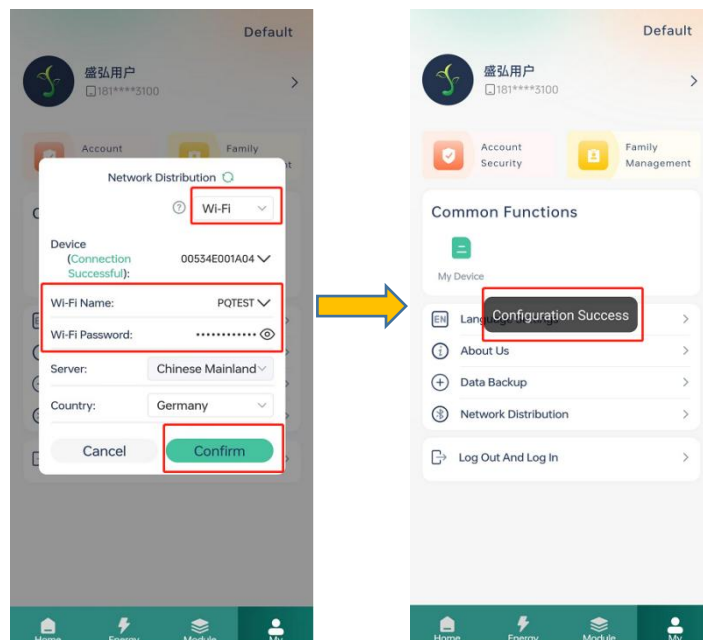
Note: the hotspot must be opened out of the 2.4G band

ESS LINK Operation Introduction



After the mobile device is successfully connected to the Wi-Fi Stick Bluetooth, enter the corresponding WiFi name and password on the APP, click Confirm, and a prompt window will pop up after the successful setup.

Note: Please distinguish the case of WIFI name and password.



Note: Because of delay in inter-network communication, if the operation is correct, it can be displayed normally within 3s (overseas server, domestic will be faster). After the device offline prompt pops up

ESS LINK Operation Introduction

2-3 times on the home page of the APP, if no device offline related prompt pops up, it means the configuration is successful. If the system of the cell phone is not adapted, and the network connection is not successful, please refer to 1.2.1 Using Bluetooth inverter to connect to the network.

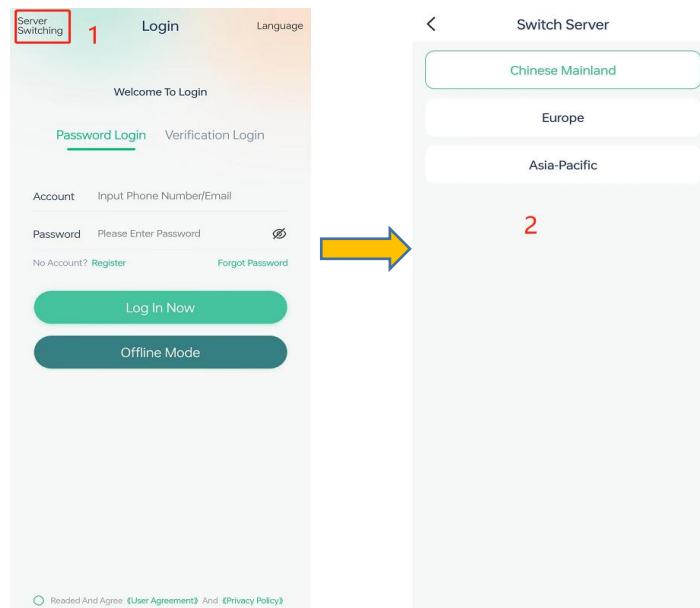


1.2.3 Offline Mode Bluetooth Inverter Distribution Networks

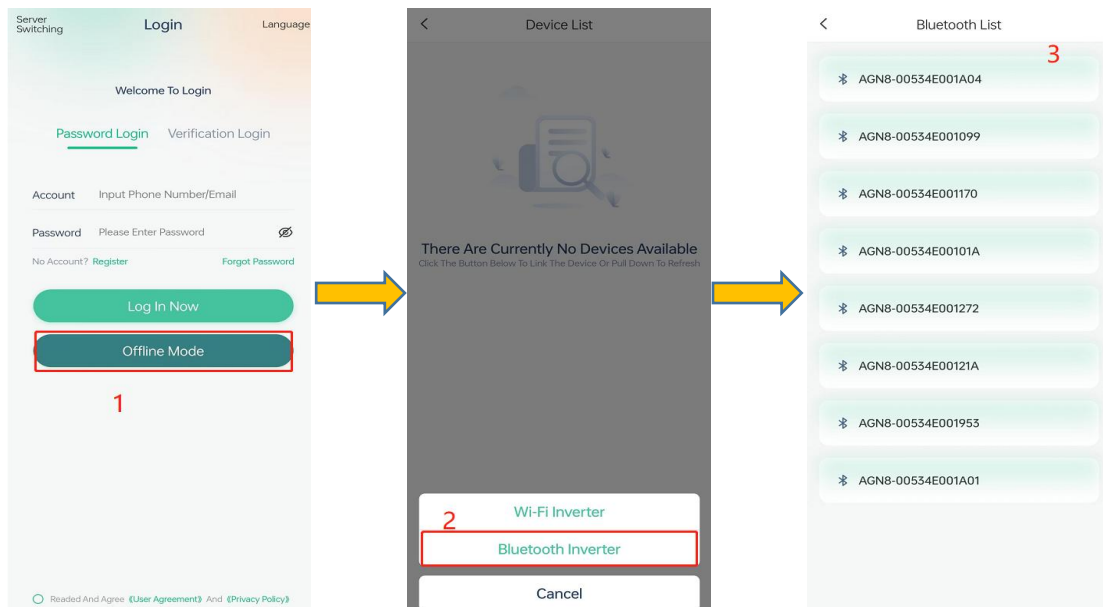
(This step can be skipped if the distribution is successful according to 1.2.2)

Step 1: Click App icon > Server switch. Enter the login interface, you can choose the server in the upper left corner, Choose a server that is close to the geographic location of the installed equipment, and the upper right corner of the **switching language**, you can choose the language type. At this time, you need to open your personal hotspot

ESS LINK Operation Introduction

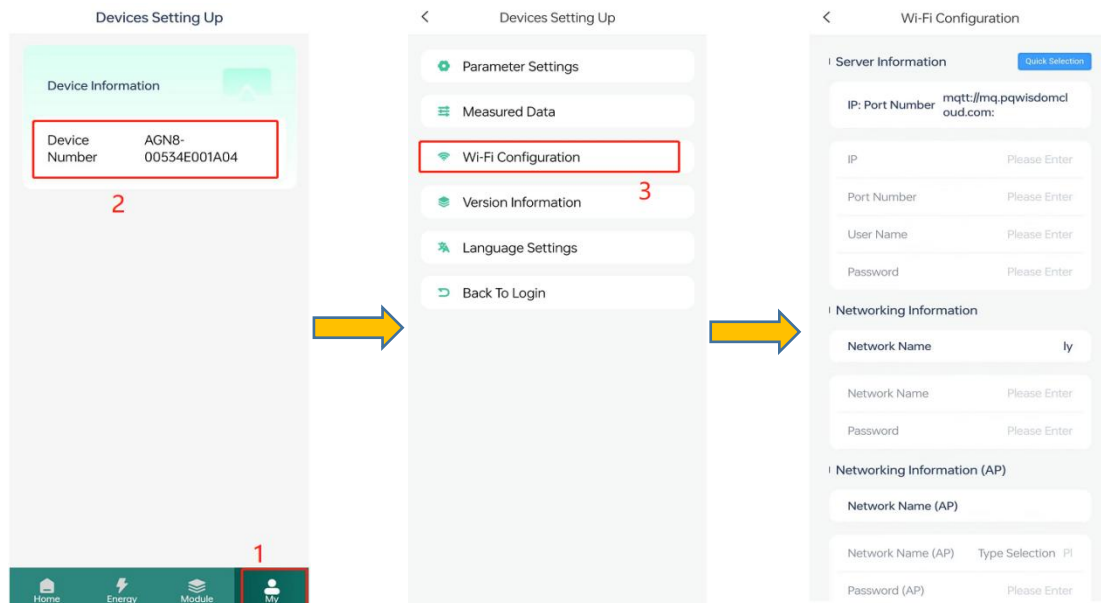


Step 2: Enter the App login interface, click **Offline Mode**> **Connect Device**> **Bluetooth Inverter** (turn on your phone's Bluetooth) > Click the number on the corresponding WIFI stick to enter.



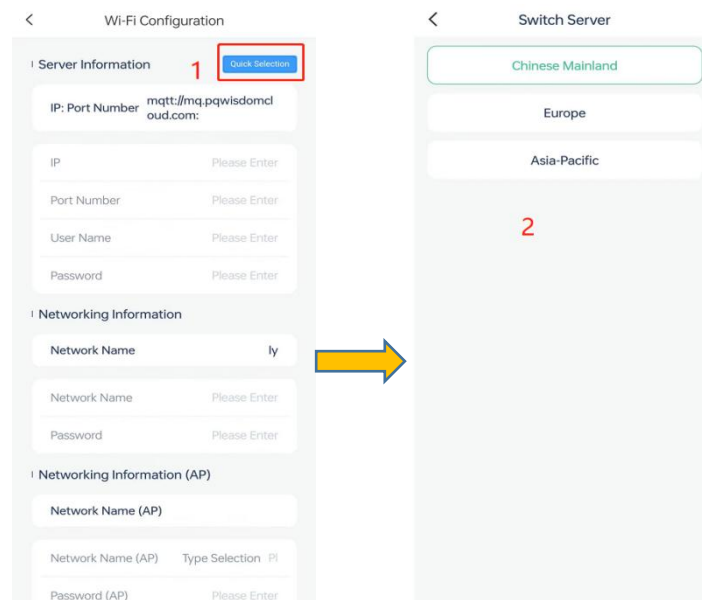
Step 3: After entering the home page, click **My** > **Device Number** > **Wi-Fi Configuration** to enter the Wi-Fi configuration interface.

ESS LINK Operation Introduction

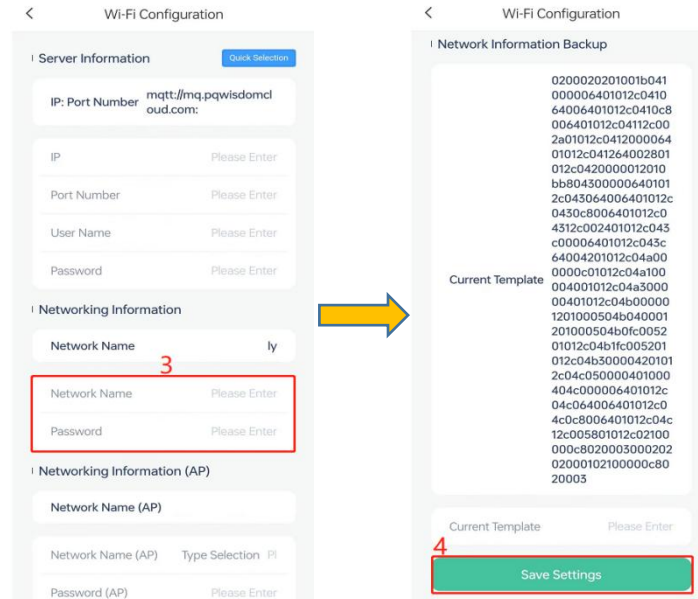


Step 4: After entering the Wi-Fi configuration interface, click **Quick Select** (select server), Enter the network name and password in the networking information (If it's a 4G communication stick then just click cancel when the prompt window pops up.), slide to the bottom and click **Save Settings**.

Note: (W-iFi name: letters + numbers; password length should not exceed 64 characters).



ESS LINK Operation Introduction



1.3 Home page Interface

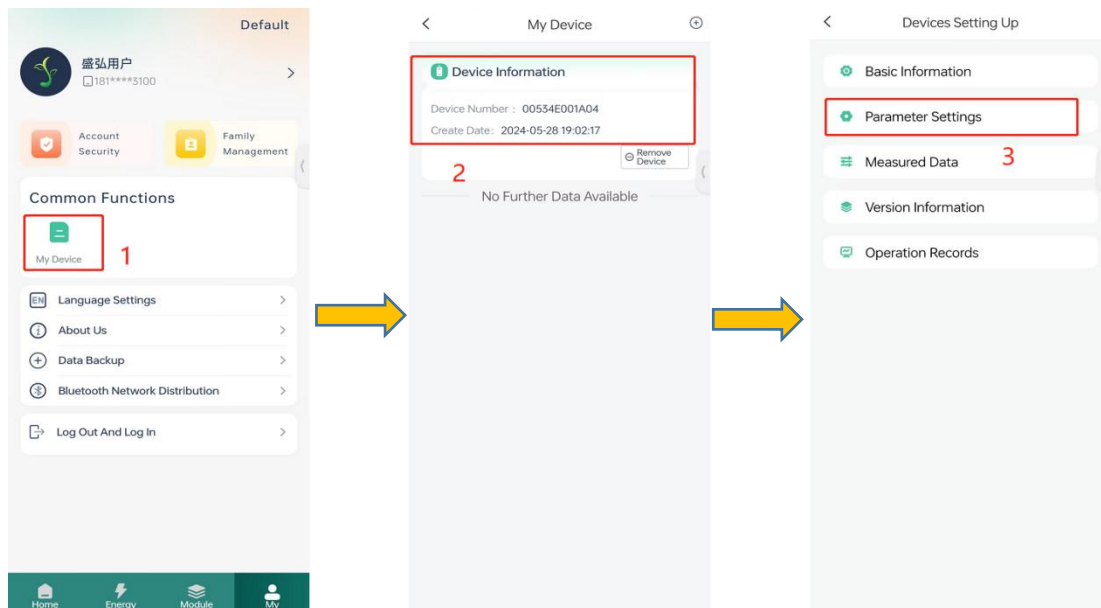
The home page of Online Mode App can monitor the number of inverter alarms, cost savings, operating power of each unit, local weather, inverter operating status, PV power generation, and carbon emission savings.



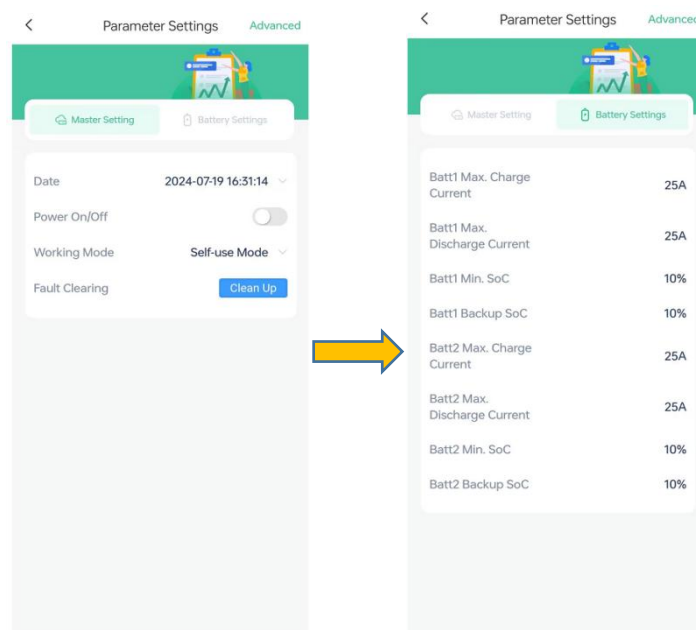
2 Setting Parameters in Online Mode

Through **Home> My> My Device> Device Information**, the device setting page appears, including inverter basic information, parameter setting, measurement data, version information, historical data and operation records, as shown in the following figure:

ESS LINK Operation Introduction



Click “Parameter Setting” to jump to the parameter setting interface, which mainly includes Host Setting, DC Setting and Advanced Setting. Users can set the basic parameters according to the country or region where the inverter is located and the actual application scenario of the inverter.



- **Host settings**

Host settings include date settings, power-on commands, operating mode settings, off-grid switching methods, and fault clearing.

- **DC Settings**

DC settings include battery self-test commands, maximum charge/discharge current settings for Battery , and so on.

ESS LINK Operation Introduction

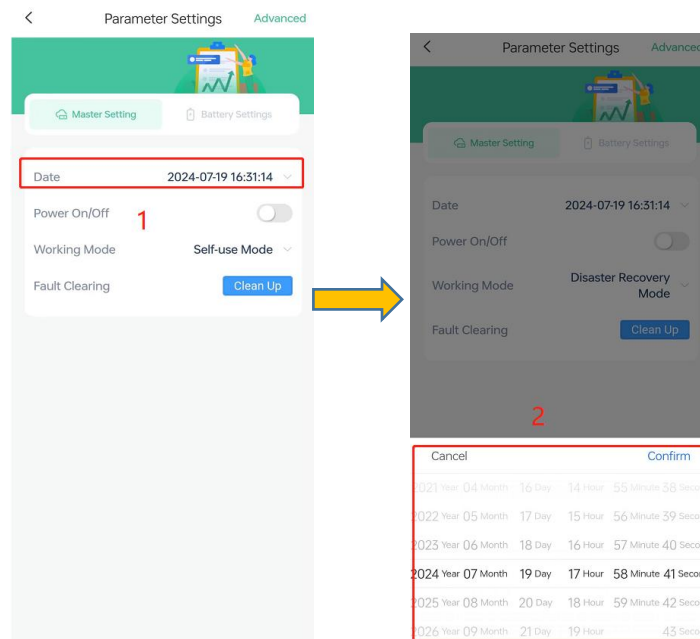
- **Advanced settings (not open to end users)**

Click the upper right corner to enter the “**Advanced Settings**”, system control parameter settings, This interface is only for use by operators.

2.1 Setting the Date

user by clicking on **Parameter Settings > Host Settings**.

- Click on the **date** to bring up the settings box
- APP will automatically recognize the current date, click to **confirm** it.



2.2 Setting the Operating Mode

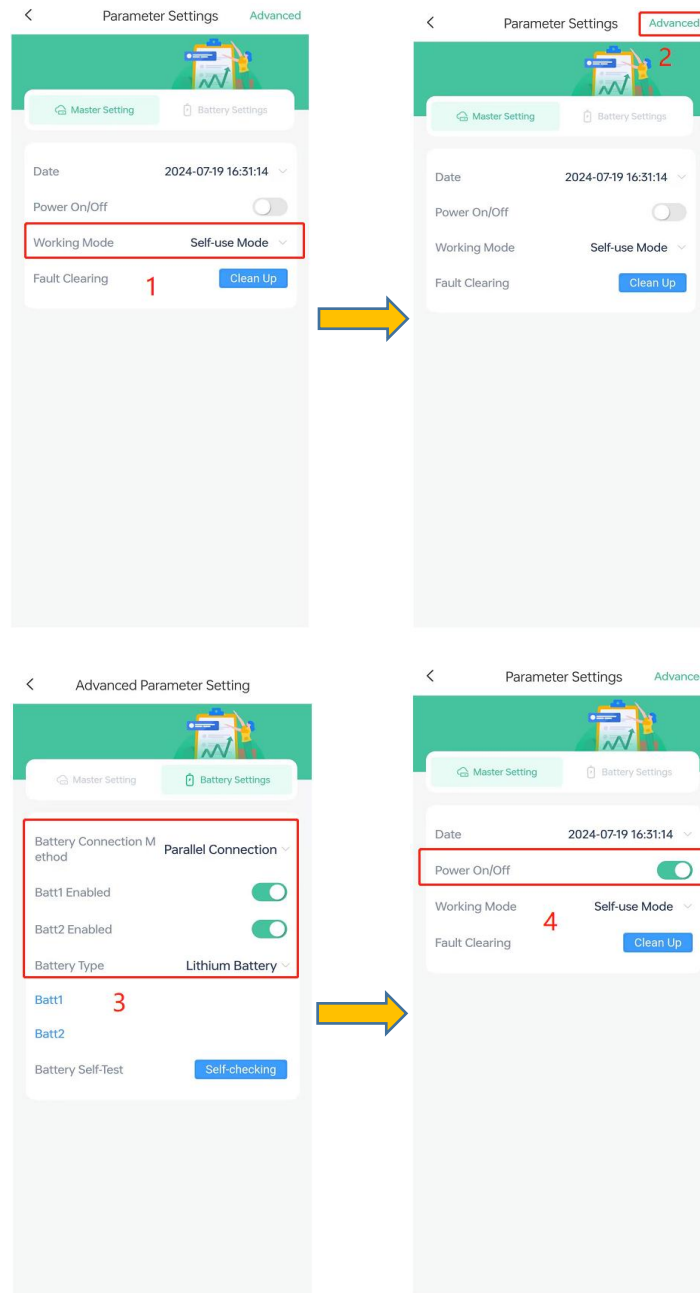
When power on for the first time, the default working mode of the inverter is self-use. Currently, the inverter has the following 4 working modes, and the user can choose the required working mode according to the actual situation. For the specific operating logic of the working mode, please refer to the user manual of each model.

(1) Self-use mode

- 1、Set the working mode as: self-use mode;
- 2、Click Advanced to enter the **advanced parameter** setting page, click DC setting;
- 3、According to the user's own needs, select the battery access method, confirm whether the battery and PV are enabled, set the type of battery, the maximum battery charging and discharging current and so on;

ESS LINK Operation Introduction

4、 Issue the power-on command (the on/off button is green).



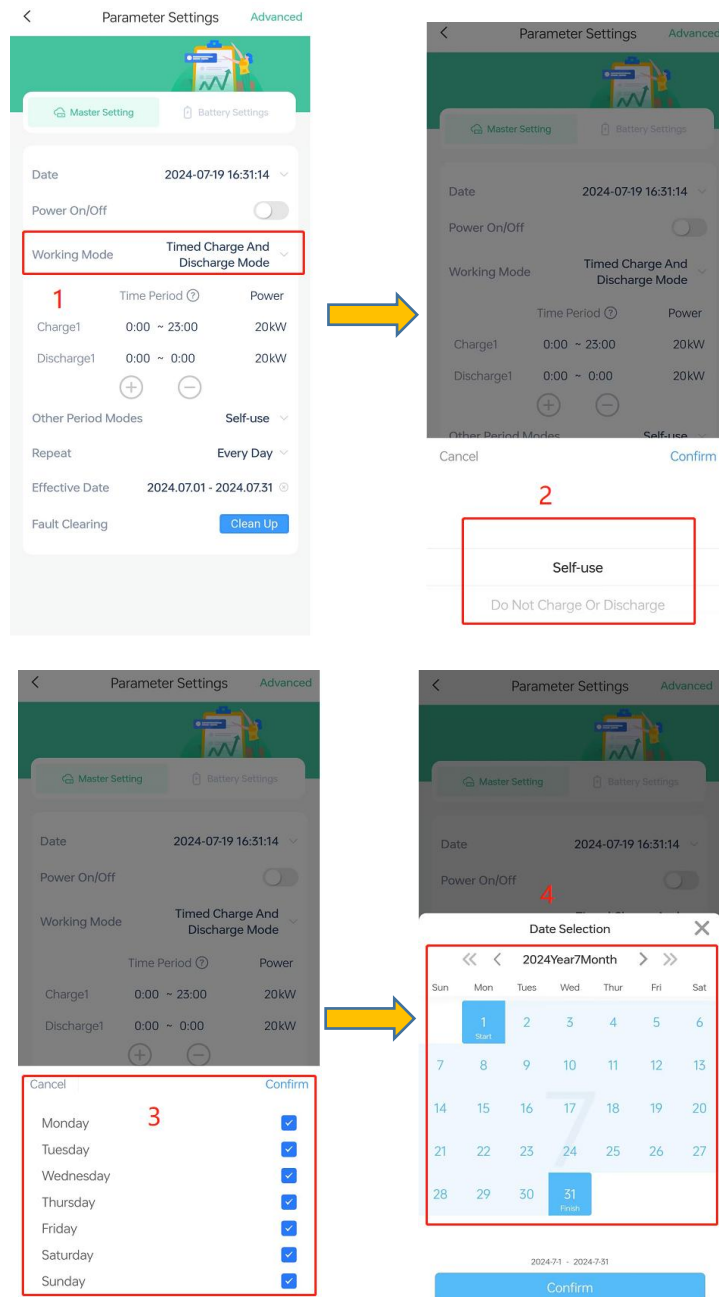
(2) Timing charge/discharge mode

1、 the working mode is set to: timed charging and discharging mode;

2、 according to the demand to set the timed charging and discharging time period (charging and discharging time period is not allowed to cross and overlap, otherwise there will be the case that the machine does not execute the command), set the charging and discharging power, press the + / - sign can be added / deleted charging and discharging time period; other time period mode can be selected to self-generate or not charging and not discharging.

ESS LINK Operation Introduction

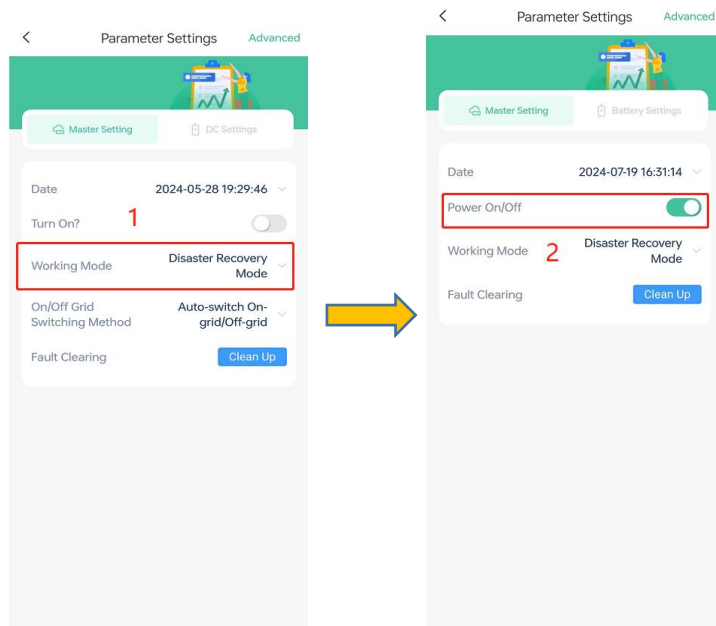
- 3、 You can set the repeat date, effective date and cut-off date within a week.
- 4、 Users can set the off-grid switching mode.
- 5、 Send down the power-on command.



(3) Disaster recovery mode

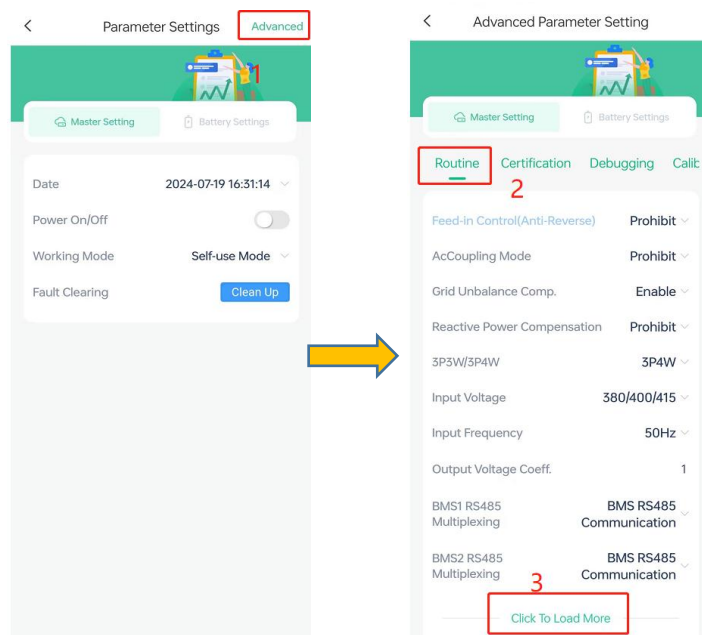
- 1、 The operating mode is set to the disaster recovery mode;
- 2、 Issue the power-on command.

ESS LINK Operation Introduction



2.3 Host Advanced Settings (not open to end users)

Home>My>My Devices>Device Information>Parameter Settings, click “Advanced” button on the upper right corner, select Host Settings, click routine, click Load More, you can view and set inverter device related information.



2.4 View Data

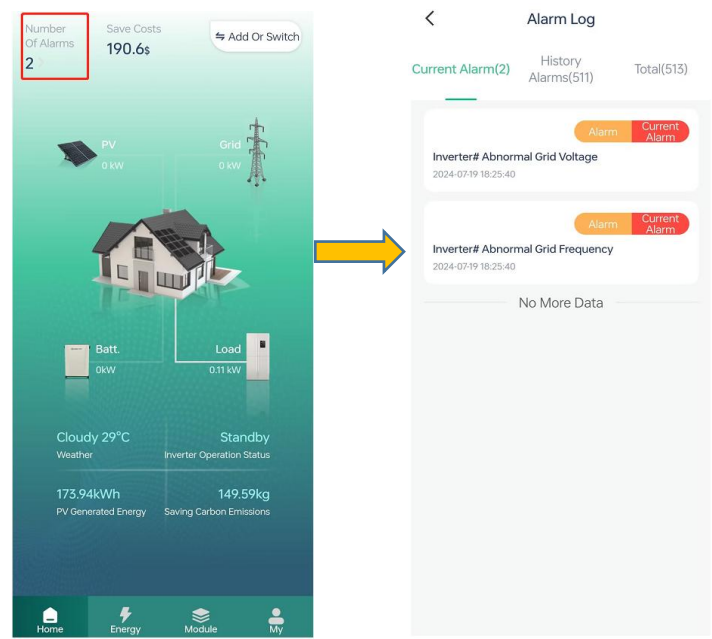
The data refresh time in online mode is 3 seconds, and there will be different delays depending on the network conditions.

2.4.1 Alarm Information

Through Home > Number of Alarms > Alarm Log , you can view current alarms,

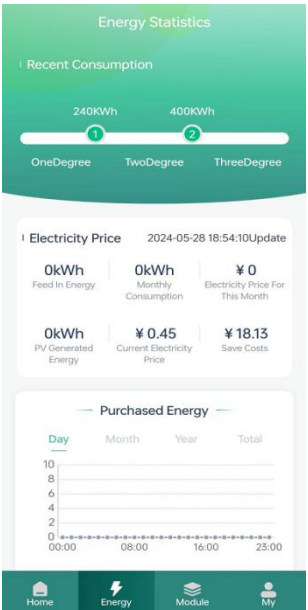
ESS LINK Operation Introduction

historical alarms, and all alarm information.



2.4.2 Power Generation Statistics

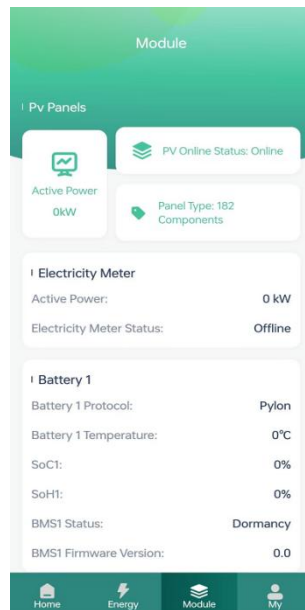
Through **Home>Energy**, this interface allows you to monitor the recent electricity consumption, electricity tariff, and purchased electricity and other related information, and display the purchased electricity, self-generated electricity, and feed-in electricity for the current day, month, year, and total in graphs. You can also view related information in **Home> My> My Device> Device Information> Historical Data**.



ESS LINK Operation Introduction

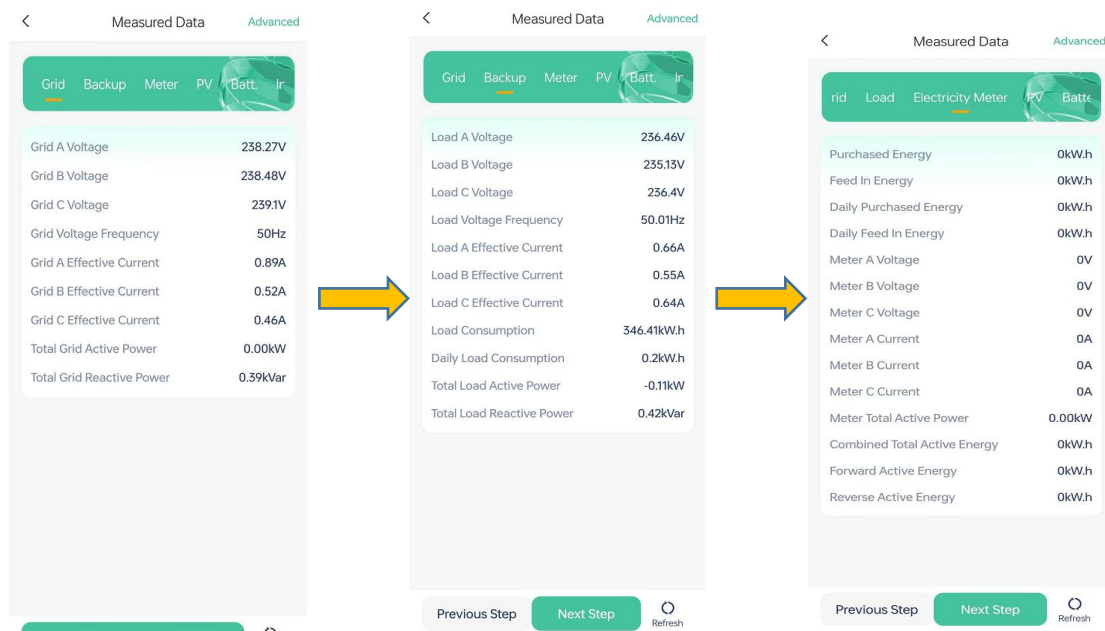
2.4.3 Photovoltaic and Battery Status

Through **Home > Modules**, this interface allows you to monitor information about PV panels, meters, and batteries.



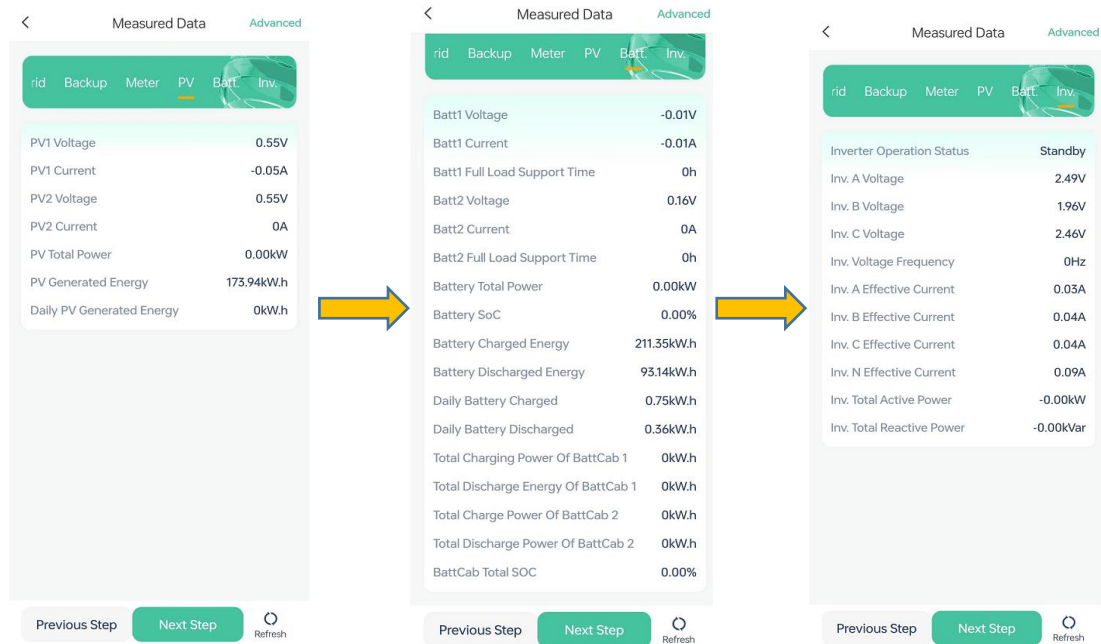
2.4.4 System Data

Through **Home>My>My Devices>Device Info>Measured Data**, you can view grid, load, meter, PV, battery, inverter, generator and other information.



Grid, load, meter data

ESS LINK Operation Introduction

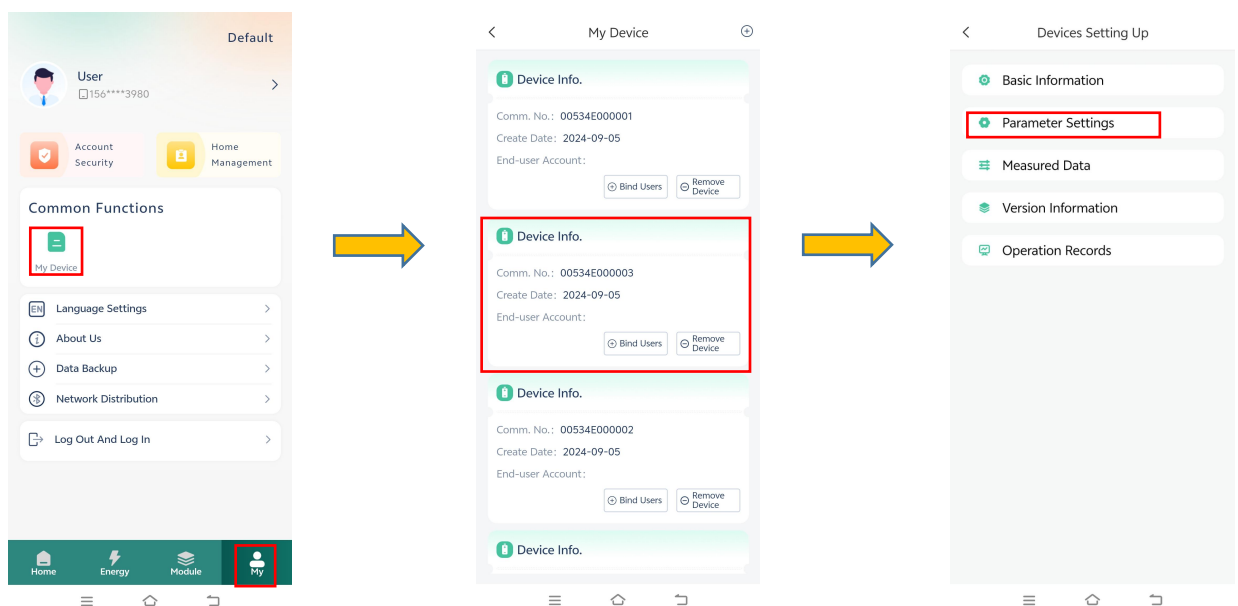


Photovoltaic, battery, inverter data

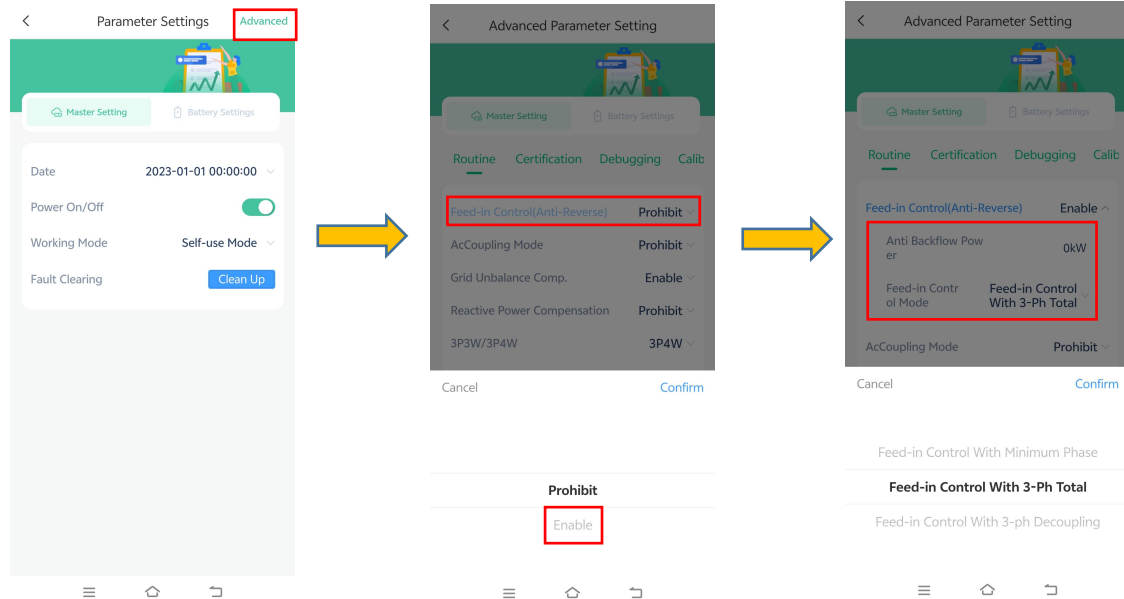
2.5 Inverter debugging and setup

2.5.1 Set the anti-reverse flow function

Go to the home page of the APP , click **My > My Device > Select the machine to be debugged according to the device number > Parameter Settings > Advanced > Routine> Enable Feed-in Control(Anti-Reverse) > Set Anti Backflow Power and Feed-in Control Mode.**

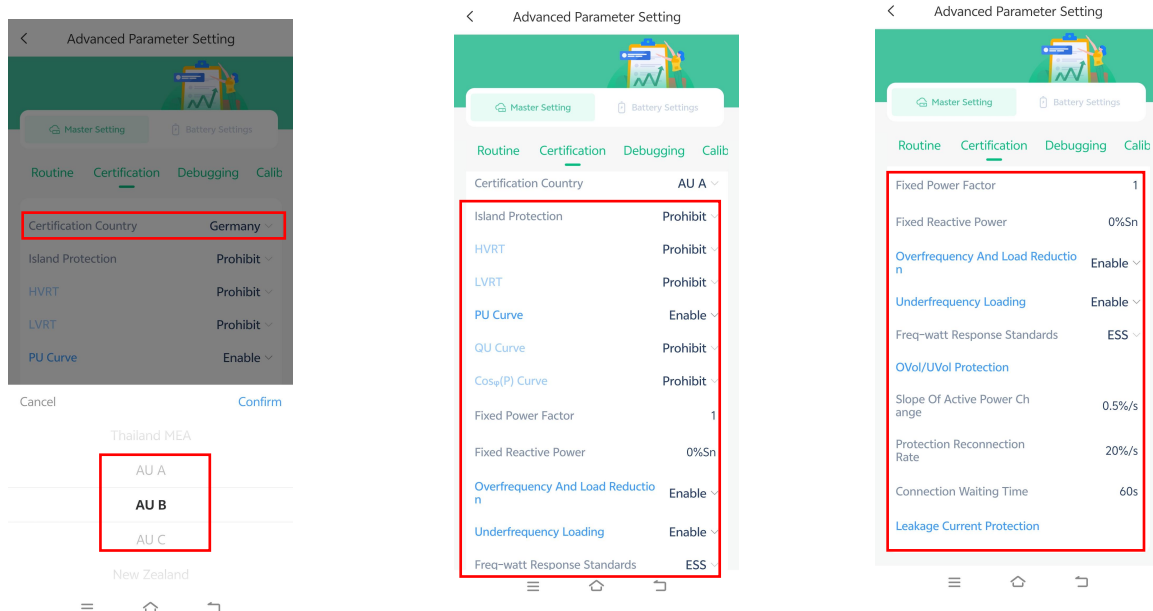


ESS LINK Operation Introduction



2.5.2 Network protection, power quality response mode and other Settings

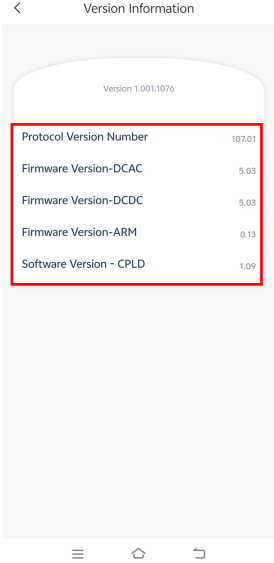
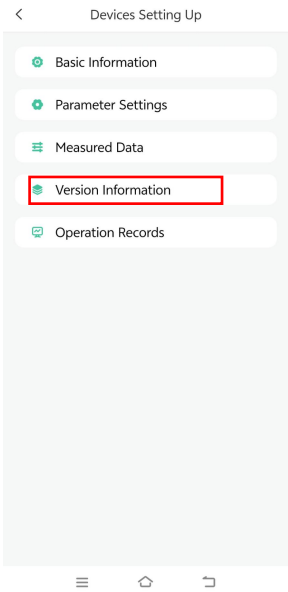
In Advanced Parameter Setting, the Certification Country can be switched to AU A/B/C countries. After enabling the other functions, grid protection settings and power quality response settings can be set as required.



2.5.3 View inverter firmware version

Go to the home page of the APP, click **My > My Device > Select the machine to be debugged according to the device number > Version Information**

ESS LINK Operation Introduction



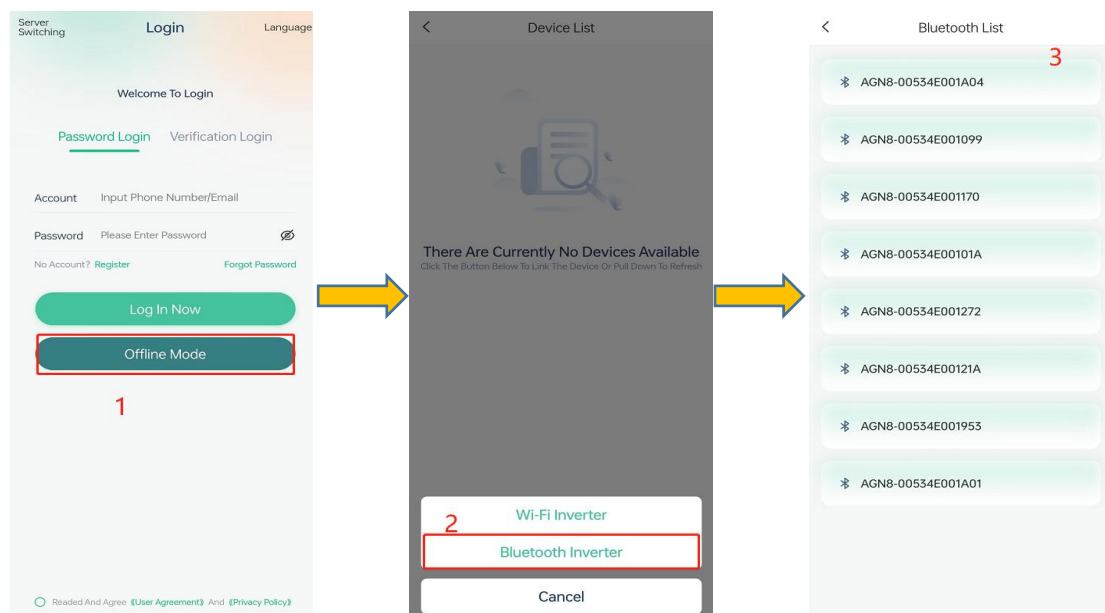
ESS LINK Operation Introduction

3 Offline Mode

In the case of no network, and in offline mode users can directly connect to the inverter via Bluetooth, providing users with a more convenient way to use. In offline mode, the data can be refreshed in real time within 5S without manual refreshing.

3.1 Offline Mode Operations

Enter the App login interface, click Offline **Mode>Connect Device>Bluetooth Inverter** (turn on your phone's Bluetooth)>Tap the number on the corresponding WIFI stick to enter.

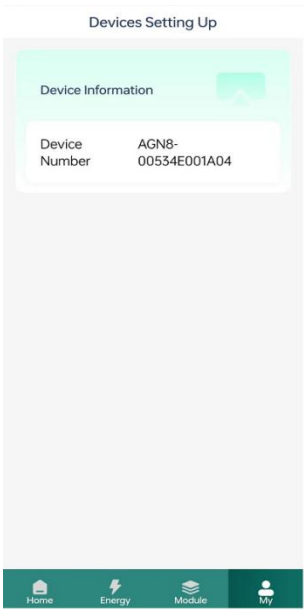
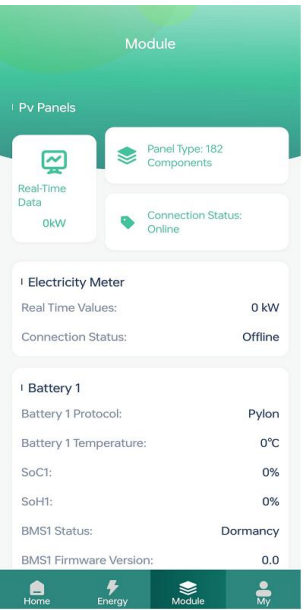
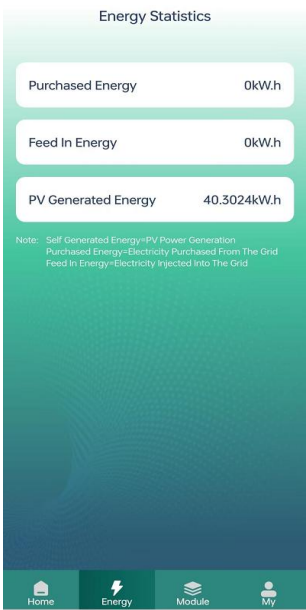


After entering the home page, you can see the operating status of the inverter, the number of alarms, the operating power of each unit, displaying the self-generated power of the household energy storage inverter and saving carbon emissions.

ESS LINK Operation Introduction



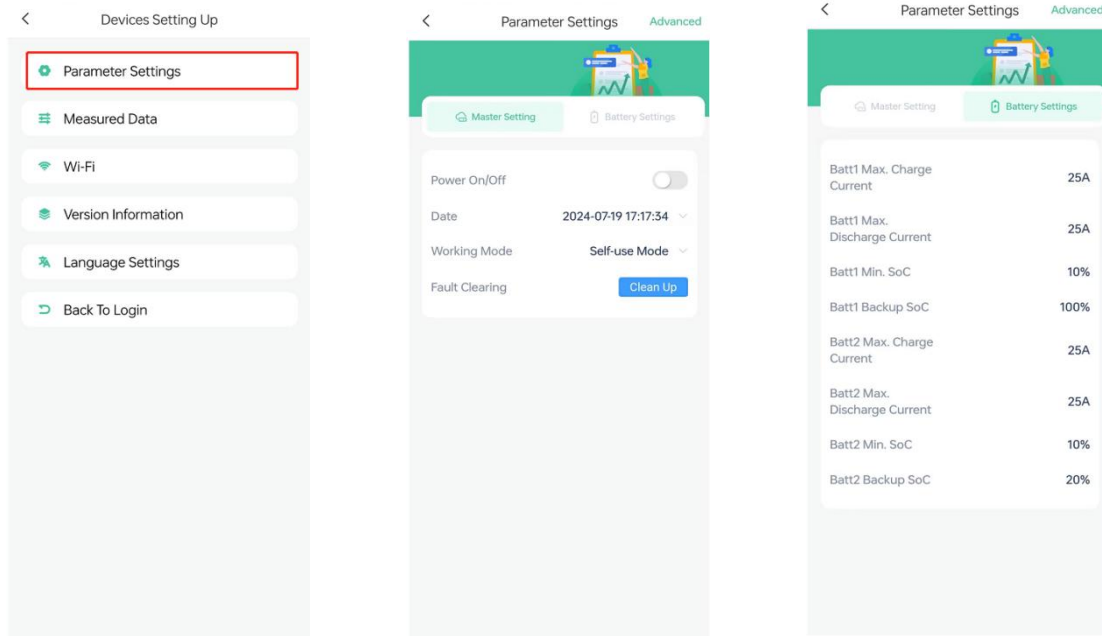
In the power interface, you can see the information of purchased power, feed-in power, self-generated power, and so on. In the component interface, you can see the information of PV, meter, battery and so on. You can see the number of the equipment in **My** Interface.



ESS LINK Operation Introduction

3.2 Advanced Parameter Setting Operations

Click the device number to enter the device setting interface, click the **parameter setting** to see the host setting, **DC setting**, users can set the basic parameters according to the country or region where the inverter is located and the actual application scenario of the inverter.



- **Host settings**

Host settings include date settings, power-on commands, operating mode settings, off-grid switching methods, and fault clearing.

- **DC Settings**

DC settings include battery self-test commands, maximum charge/discharge current settings for Battery , and so on.

- **Advanced settings (not open to end users)**

Click **Advanced**, enter the password 123456, you can enter the advanced parameter setting interface. System control parameter setting, this interface is for debugging use, users should not set up

Note: Before issuing the power-on command, it is necessary to ensure that the working mode and working parameters match the current system status and are issued to the inverter.

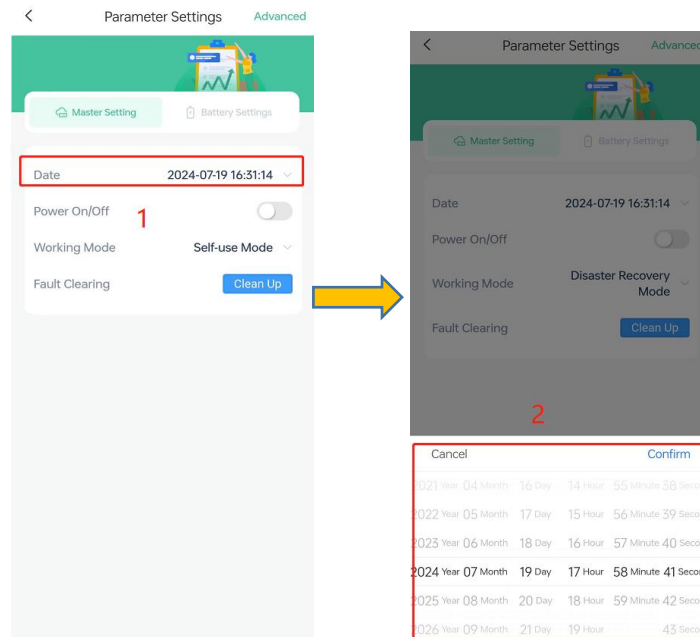
3.2.1 Setting the date

user by clicking on **Parameter Settings > Host Settings**.

- Click on the **date** to bring up the settings box

ESS LINK Operation Introduction

- APP will automatically recognize the current date, click to **confirm** it.



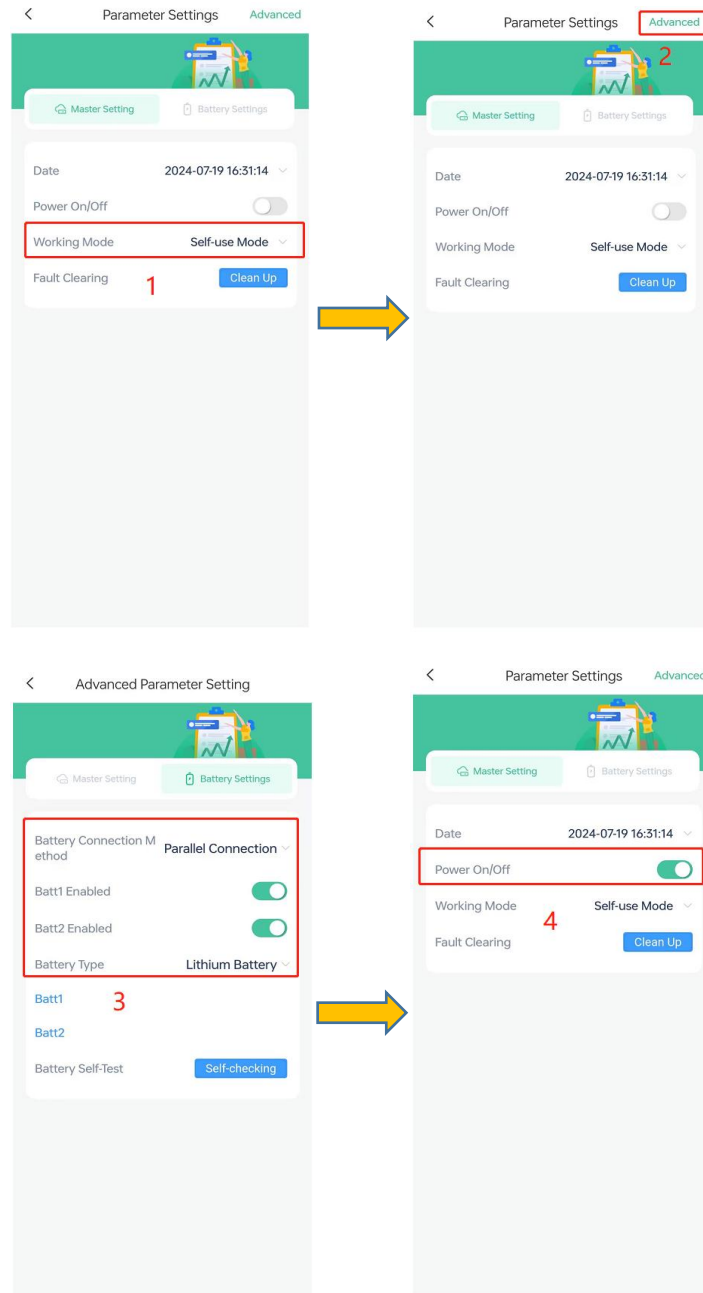
3.2.2 Setting the Operating Mode

When power on for the first time, the default working mode of the inverter is self-use. Currently, the inverter has the following 3 working modes, and the user can choose the required working mode according to the actual situation. For the specific operating logic of the working mode, please refer to the user manual of each model.

(1) Self-use mode

- 1、Set the working mode as: self-use mode;
- 2、Click Advanced, enter the password 123456 to enter the **advanced parameter** setting page, click DC setting;
- 3、According to the user's own needs, select the battery access method, confirm whether the battery and PV are enabled, set the type of battery, the maximum battery charging and discharging current and so on;
- 4、Issue the power-on command (the on/off button is green).

ESS LINK Operation Introduction



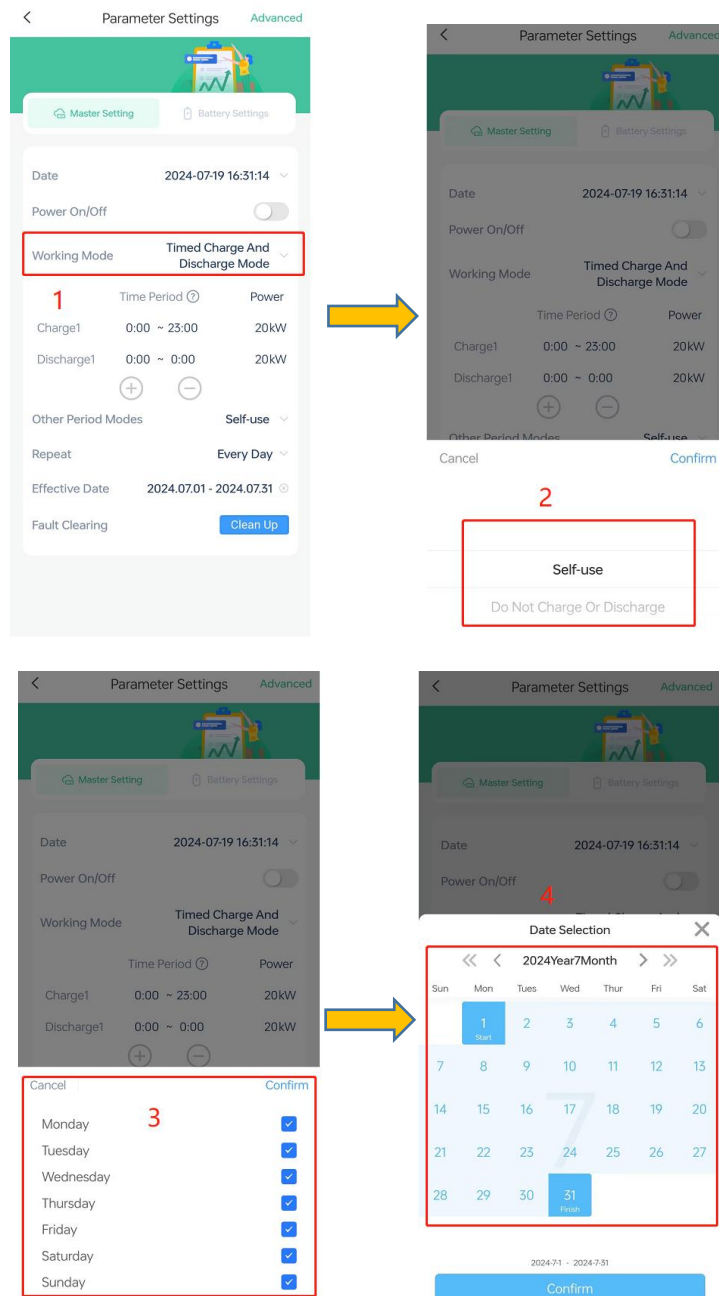
(2) Timing charge/discharge mode

- 1、 the working mode is set to: timed charging and discharging mode;
- 2、 according to the demand to set the timed charging and discharging time period (charging and discharging time period is not allowed to cross and overlap, otherwise there will be the case that the machine does not execute the command), set the charging and discharging power, press the + / - sign can be added / deleted charging and discharging time period; other time period mode can be selected to self-generate or not charging and not discharging.
- 3、 You can set the repeat date, effective date and cut-off date within a

ESS LINK Operation Introduction

week.

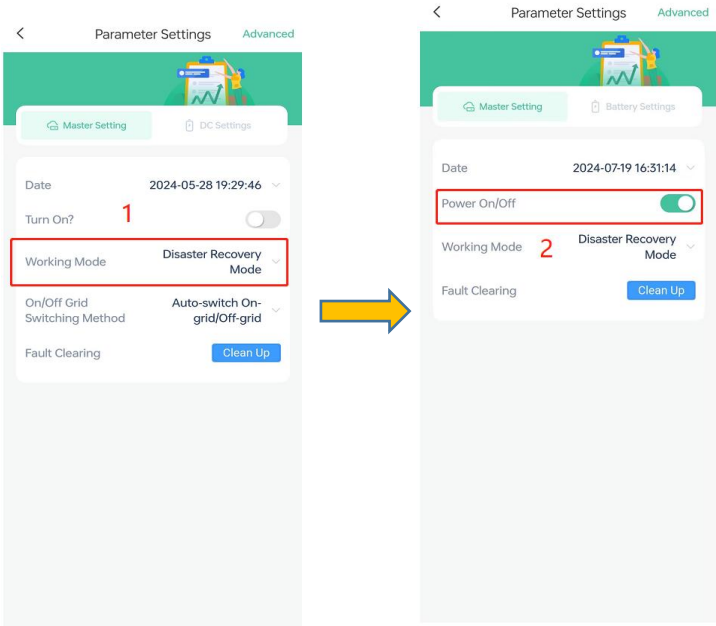
- 4、 Users can set the off-grid switching mode.
- 5、 Send down the power-on command.



(3) Disaster recovery mode

- 1、 The operating mode is set to the disaster recovery mode;
- 2、 Issue the power-on command.

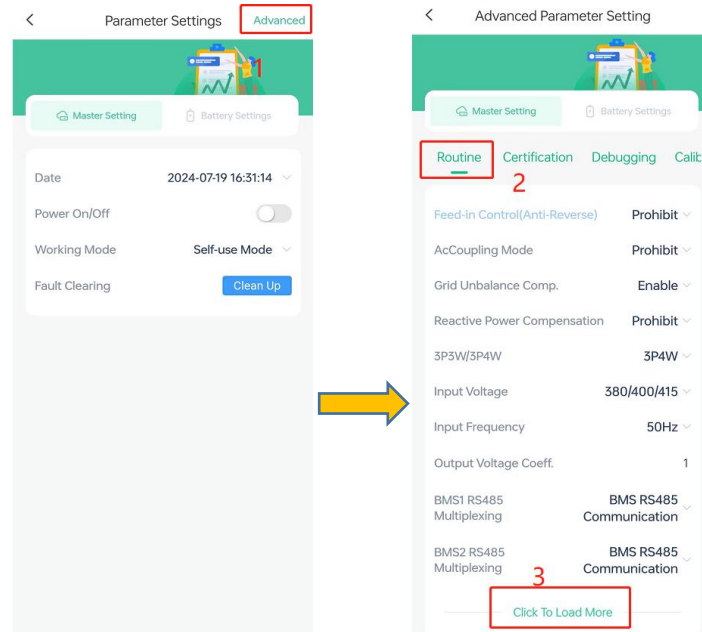
ESS LINK Operation Introduction



ESS LINK Operation Introduction

3.2.3 Host Advanced Settings (not open to end users)

Home> My> My Devices> Device Information> Parameter Settings, click “Advanced” button on the upper right corner, enter the password 123456, select Host Settings, click routine, click Load More, you can view and set inverter device related information.

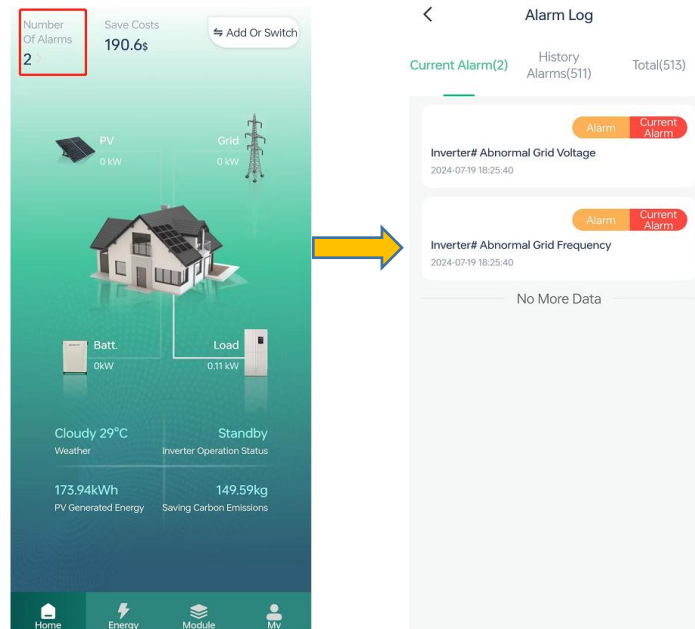


ESS LINK Operation Introduction

3.3 View Data

3.3.1 Alarm Information

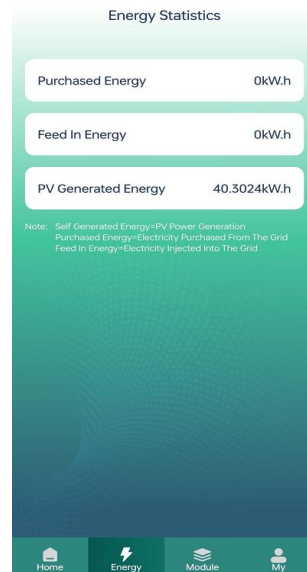
Through **Home > Number of Alarms > Alarm Log** , you can view current alarms, historical alarms, and all alarm information.



3.3.2 Power Generation Statistics

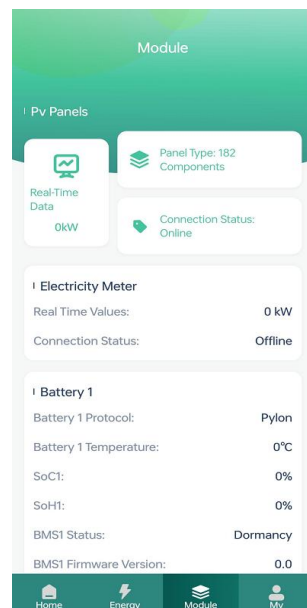
Through **Home>Energy**, this interface allows you to monitor the recent electricity consumption, electricity tariff, and purchased electricity and other related information, and display the purchased electricity, self-generated electricity, and feed-in electricity for the current day, month, year, and total in graphs. You can also view related information in **Home> My> My Device> Device Information> Historical Data**.

ESS LINK Operation Introduction



3.3.3 Photovoltaic and Battery Status

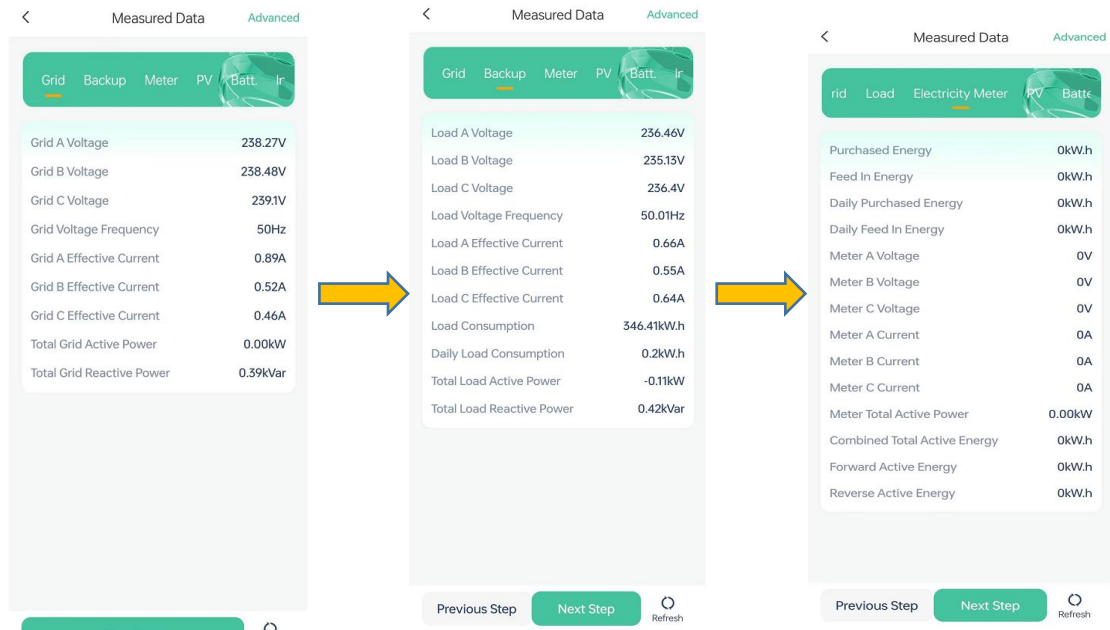
Through **Home > Modules**, this interface allows you to monitor information about PV panels, meters, and batteries.



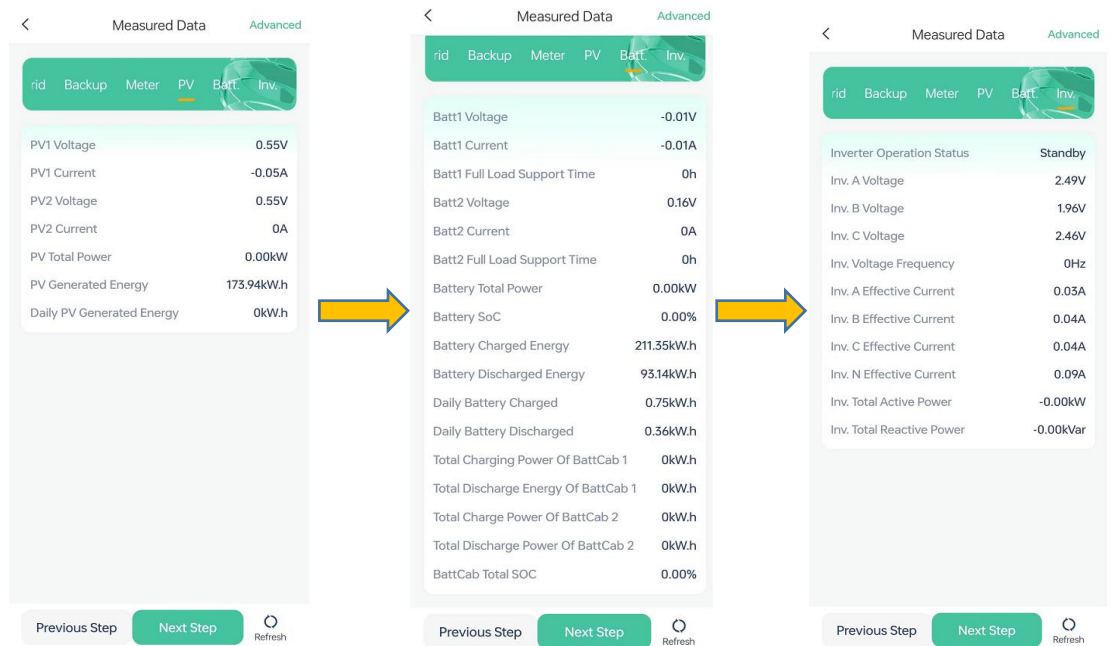
3.3.4 System Data

Through Home>My>My Devices>Device Info>Measured Data, you can view grid, load, meter, PV, battery, inverter, generator and other information.

ESS LINK Operation Introduction



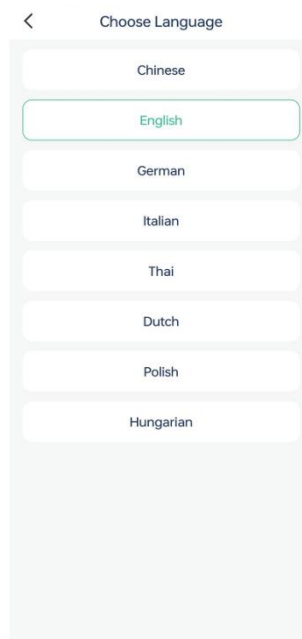
Grid, load, meter data



Photovoltaic, battery, inverter data

ESS LINK Operation Introduction

3.3.5 Language Settings



Users can change the language of the app by clicking **Language Settings**.