

Isuna U20K-PH parallel guide

This guide is designed to help you understand and correctly use this function. Please read this guide carefully before use and follow the instructions.

1. Wiring Instructions

The wiring of the parallel system is divided into two parts, respectively the parallel communication cable and the power cable.

1.1. Communication Cable

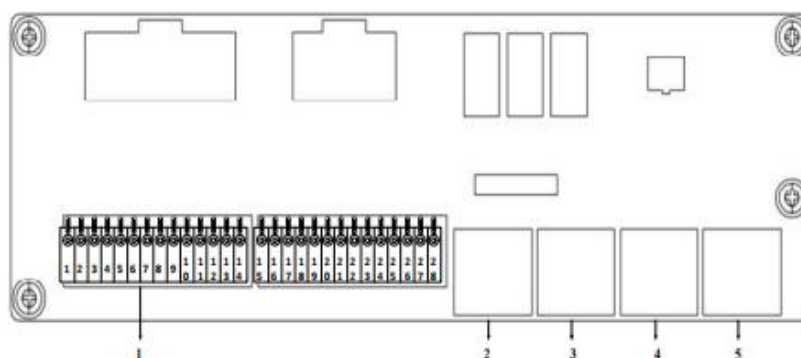


Figure 1.1 Schematic diagram of external communication interface board

4	LINK1
5	LINK2

Figure 1.2 External communication interface board definition

If multiple inverters are connected in parallel, connect one end of the parallel cable to "LINK1" of inverter 1 and the other end to "LINK2" of inverter 2, and so on.

1.2. Power Cable

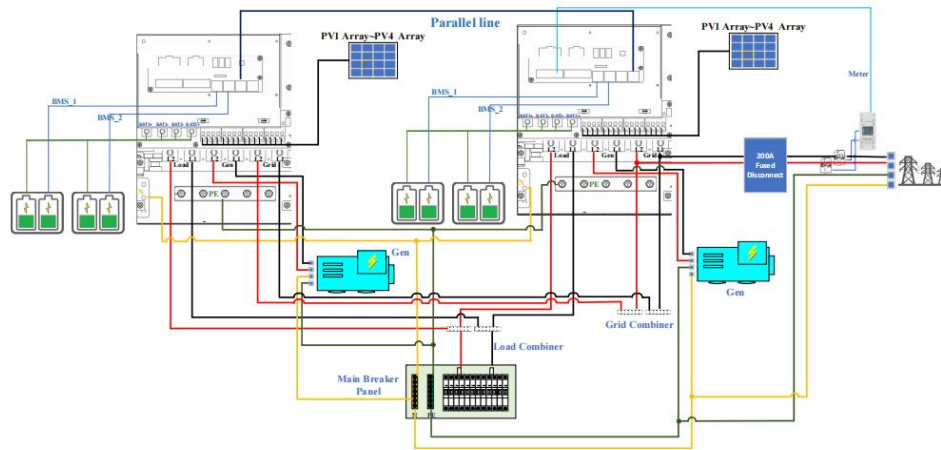


Figure 2.1 2 parallel standard wiring diagram 120V/240V

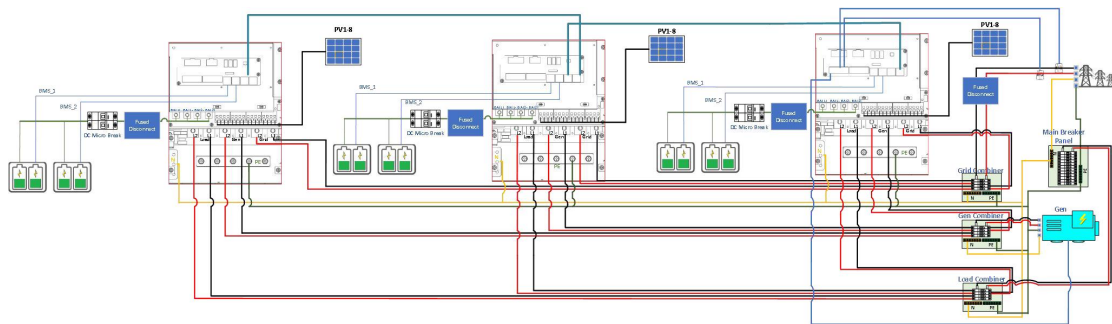
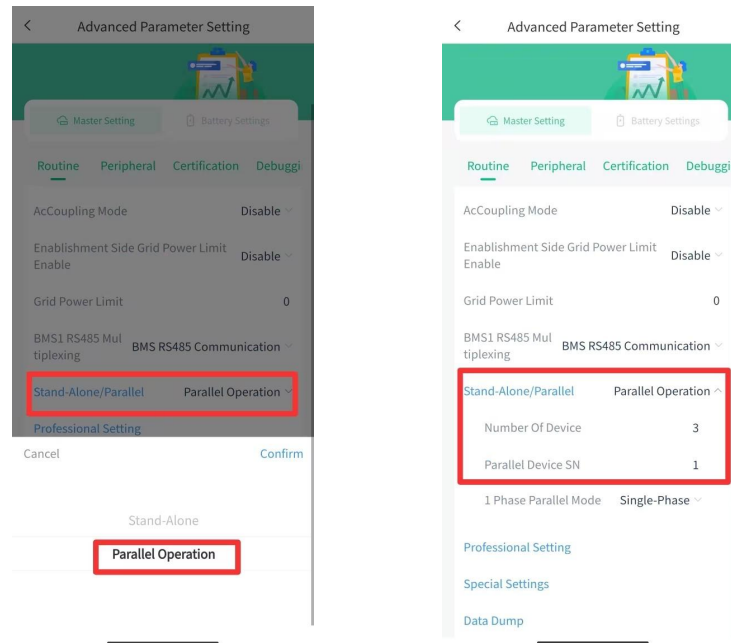


Figure 2.2 3 parallel standard wiring diagram 120V/240V

2. APP Operation Instructions

Enter to 【Set up】 - 【Advanced Settings】 - 【Master Settings】 - 【Routine】 ,and follow the steps below.



Note: 【Number Of Device】 is the total number of parallel inverters.
 【Parallel Device SN】 is set to "1" for the master, and the remaining slaves are arranged in order.

3. Notes

- 3.1. When creating a site, all devices in parallel need to be bound to the same site;
- 3.2. Before using the parallel function, power on a single device first to confirm that the single device can operate normally;
- 3.3. The battery of each device must be connected independently. It is not allowed to connect a single battery to multiple devices;
- 3.4. The connection method of CT clamp is the same as that of a single device, and the CT clamp arrow points to the grid side.