

## 1.Preface

This upgrade guide is used for Isuna6000SO WIFI program upgrade guide.

## 2.Preparation before upgrading

Tool preparation: computer, upgrade tool (USB converter)

Software preparation: The flash-download software must be installed on the computer. The firmware list is as follows:

Serial number	Firmware Name
1	bootloader.bin
2	CommDongleStick.bin
3	ota_data_initial.bin
4	partition-table.bin

**Note: Please download the program to your computer desktop in advance for easy searching**

The upgrade software and firmware are attached below. Save them to your computer desktop and unzip them.



flash\_download\_CommDongleStick.zip



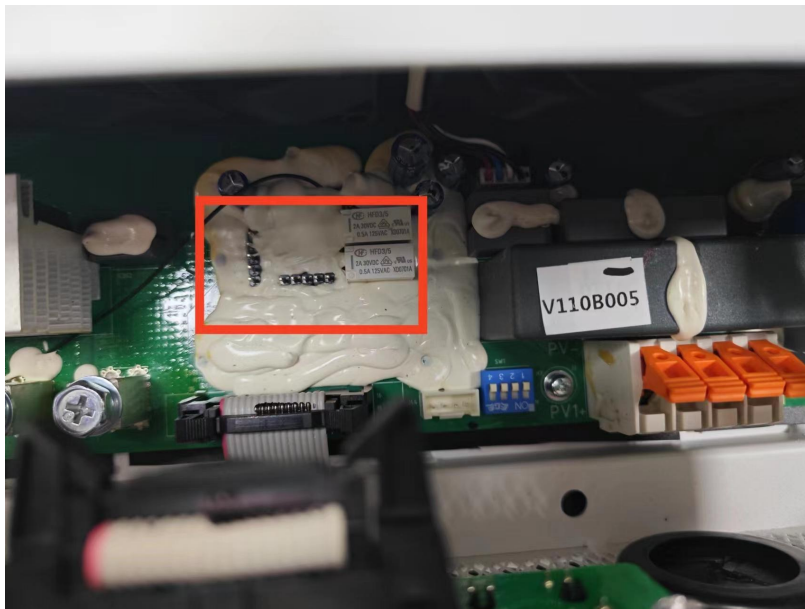
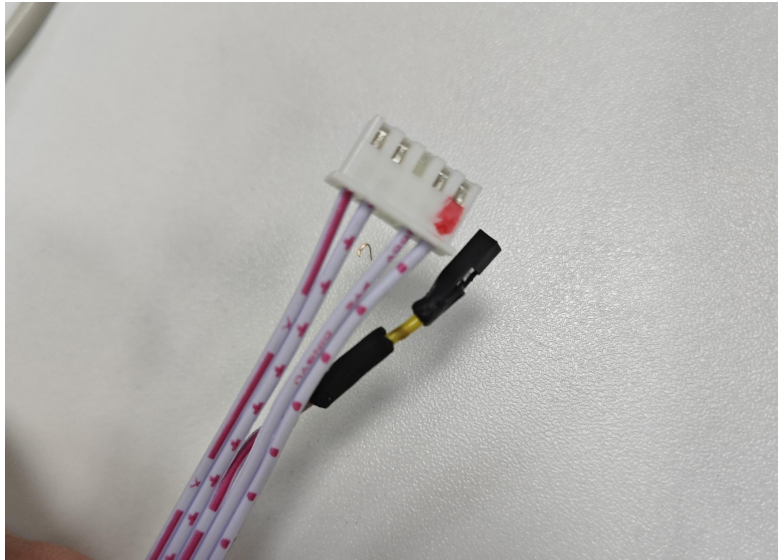
ck.zip

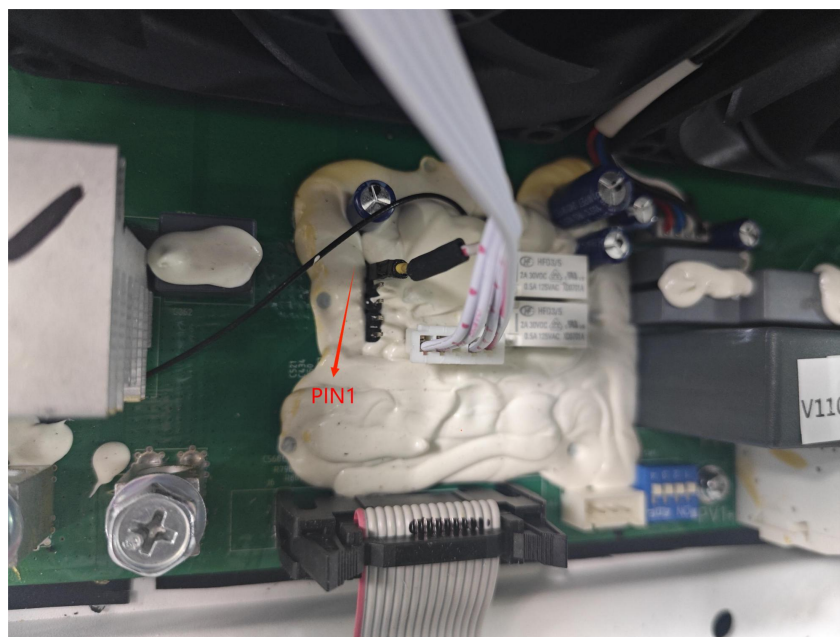
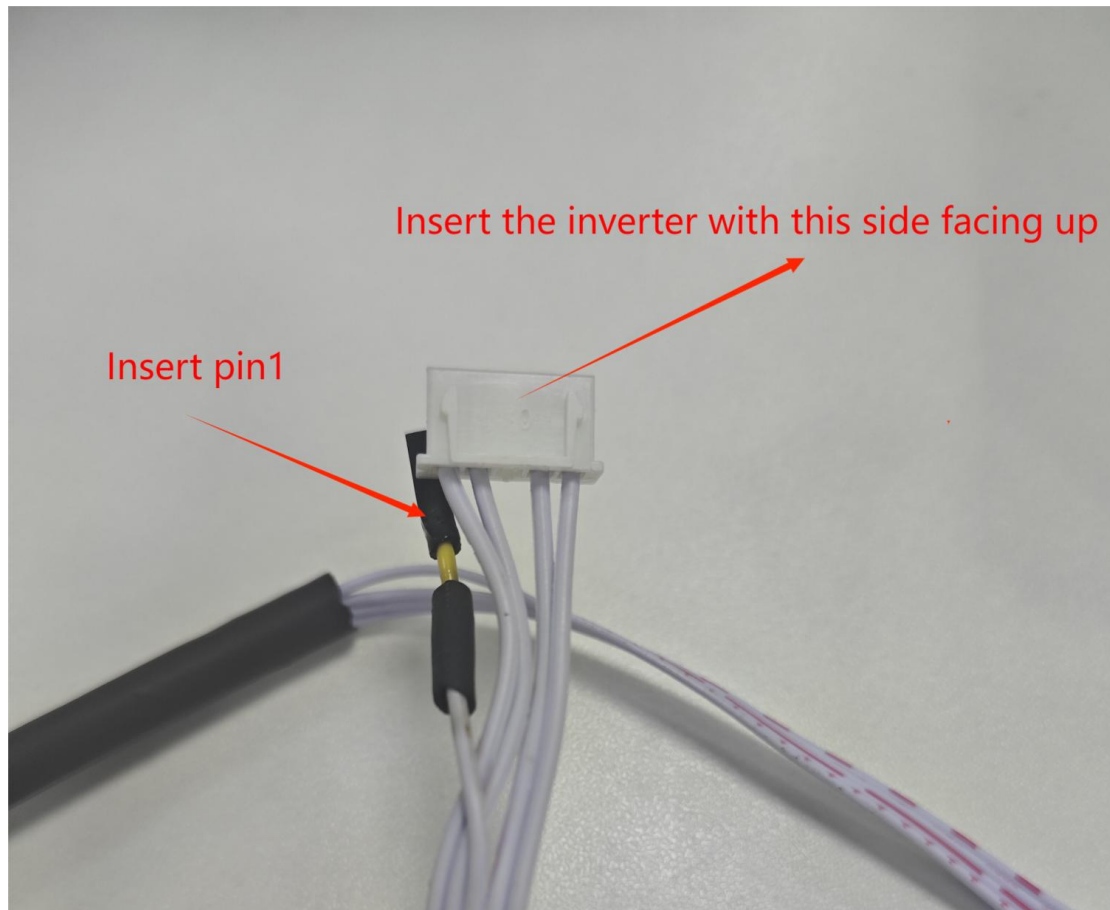
### 3.Upgrade steps

1. Connect the upgrade tool as shown below

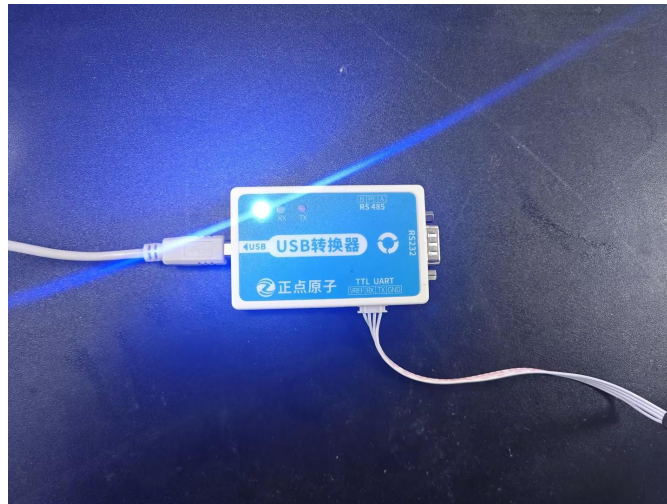


2. Insert the terminals into the inverter as shown below

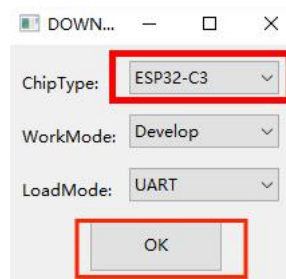




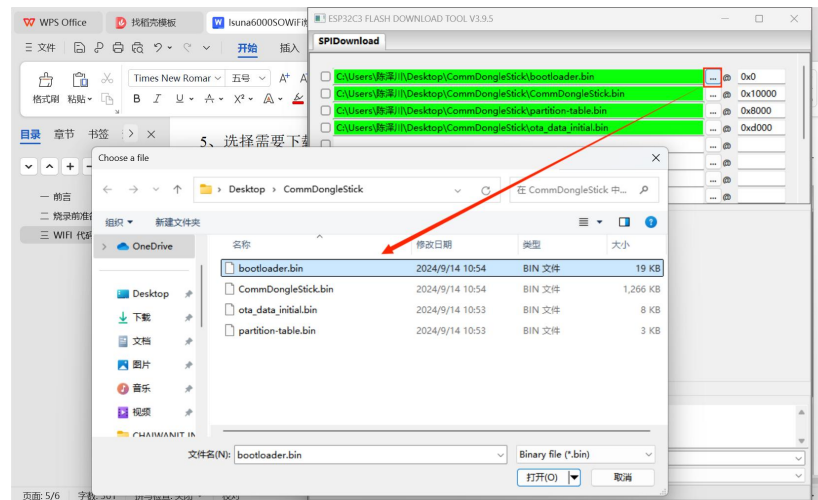
3. Insert the USB port of the upgrade tool into the USB port of the computer. The USB converter light will light up and power on the inverter (either the battery or the grid).



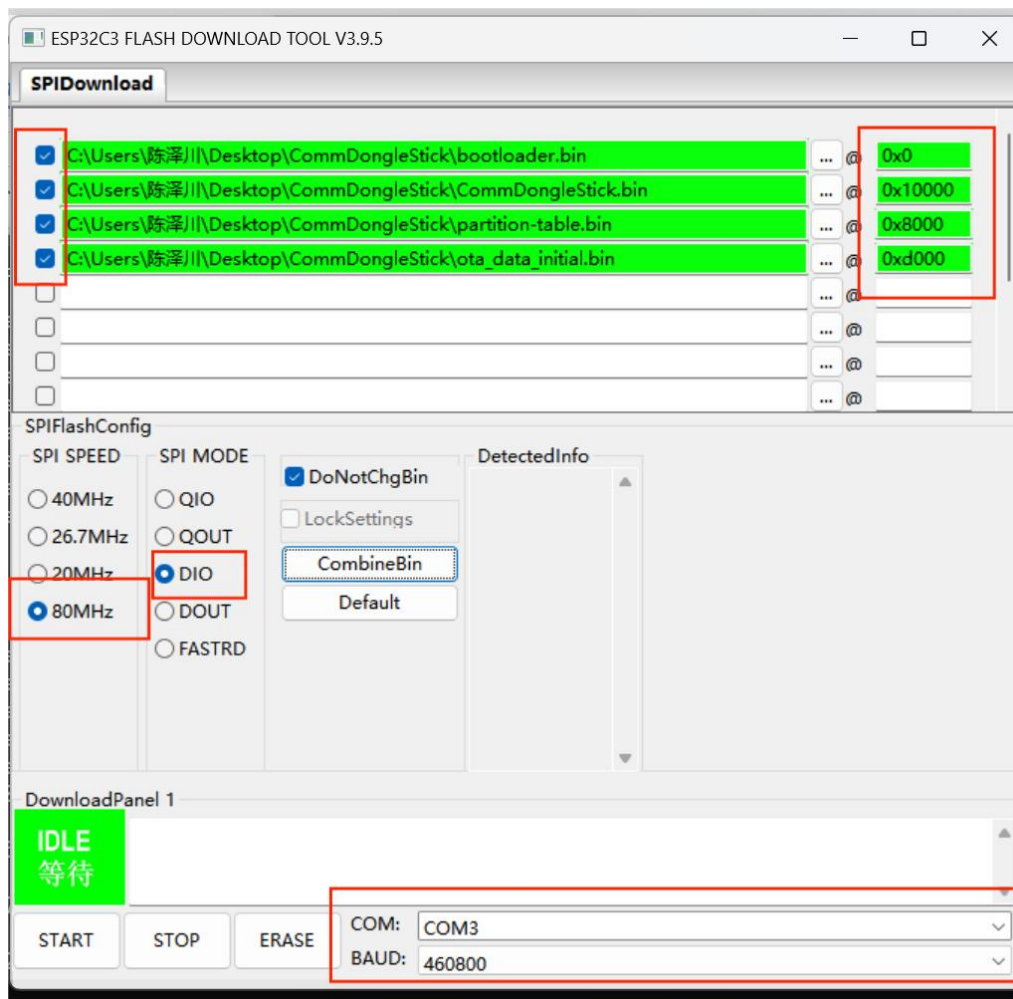
4. Open the software [flash\\_download\\_tool.exe](#), a window pops up, select ChipType as **ESP32-C3**, and click **OK**



5. Select the file you want to download, click "...", select the file, and select the firmwares in the order shown in the figure below.



6. Check the file, set the corresponding addresses of the 4 burning files (note that the files and addresses must correspond one to one); select the Com port (depending on the computer port connected to the USB), set the baud rate to 460800; select 80MHz for SPI Speed.



7. Click START to start the upgrade. After the upgrade is complete, the following figure will appear. After the upgrade is complete, disconnect the inverter and unplug the terminal.

