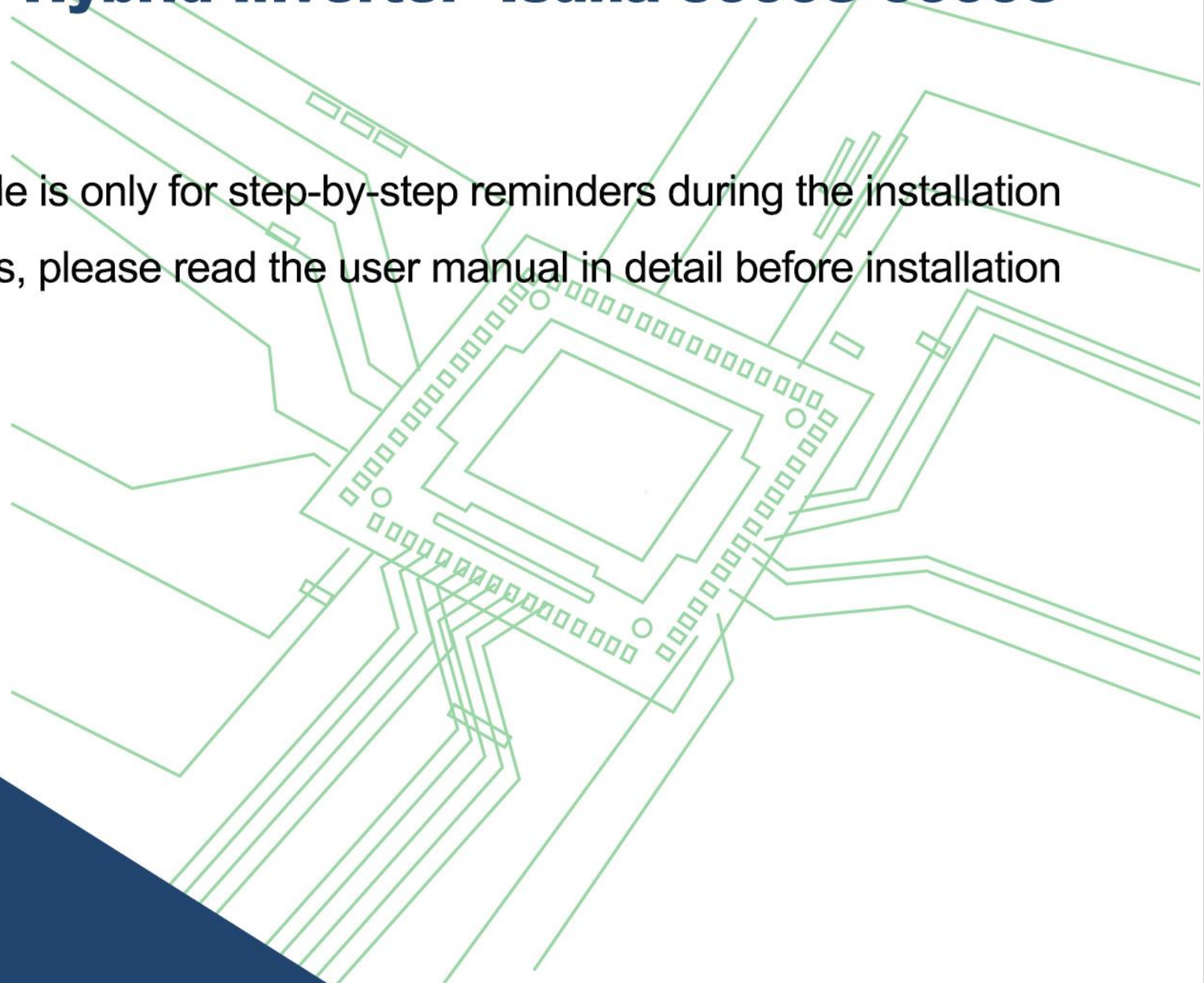


Installation Instructions

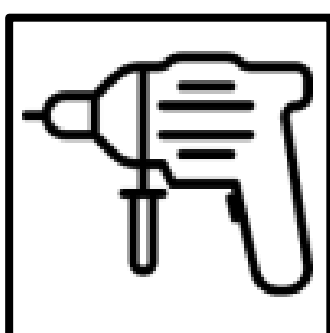
Single Phase LV Hybrid Inverter -Isuna 3000S-6000S



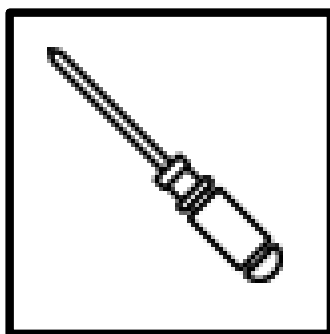
This guide is only for step-by-step reminders during the installation process, please read the user manual in detail before installation



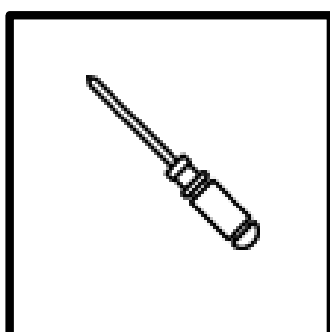
Mounting tools



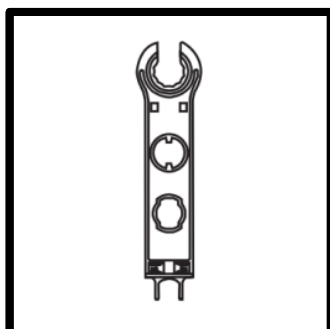
Electric drill: for drilling holes in walls.



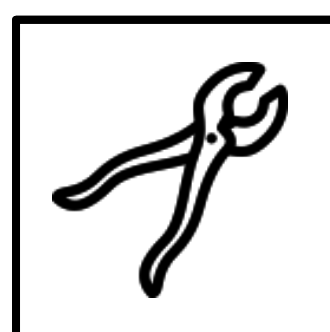
M6 screwdriver: Removal and installation of screws and wiring.



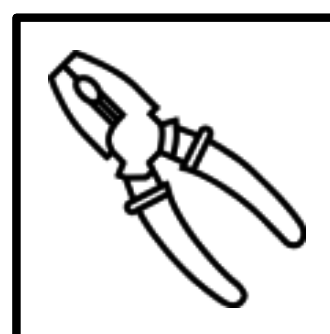
M4 screwdriver: Removal and installation of screws and wiring.



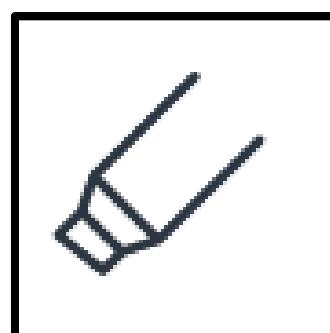
Removal tool: Remove and install the PV terminal.



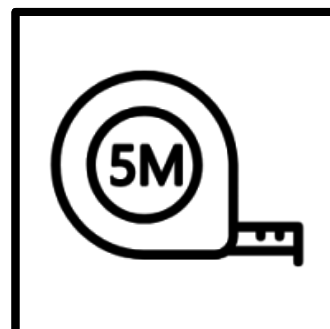
Wire strippers: Strip wires.



Crimping pliers: Crimp PV, BAT cable wires.

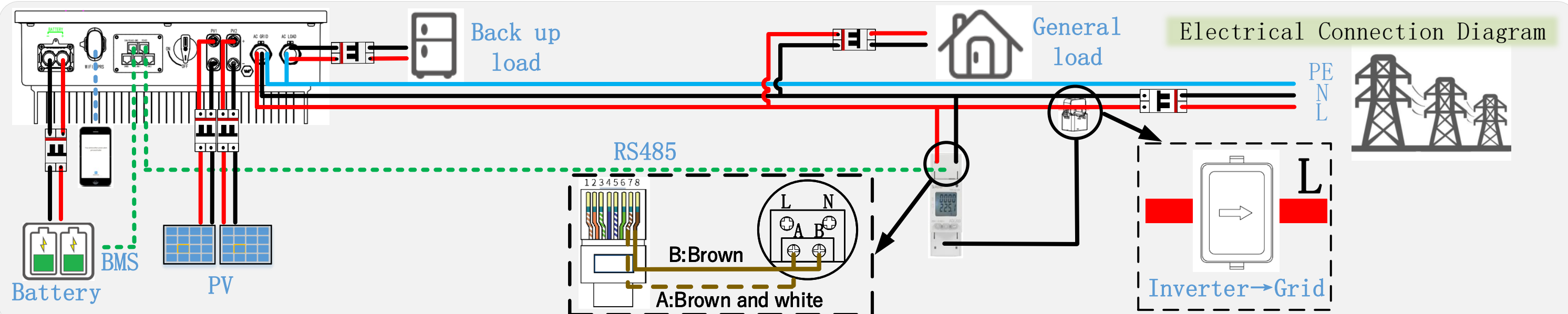
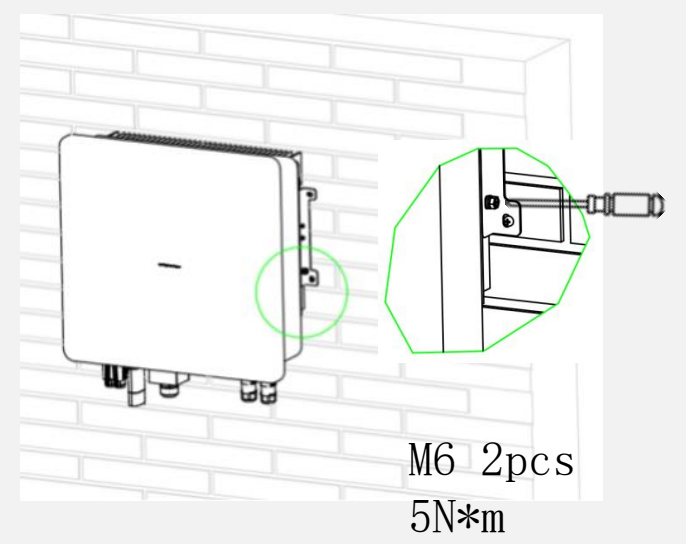
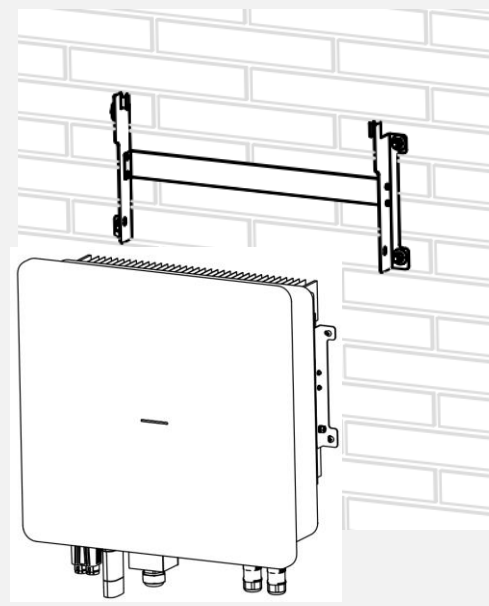
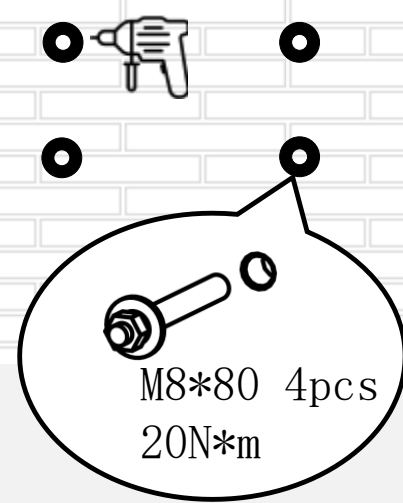
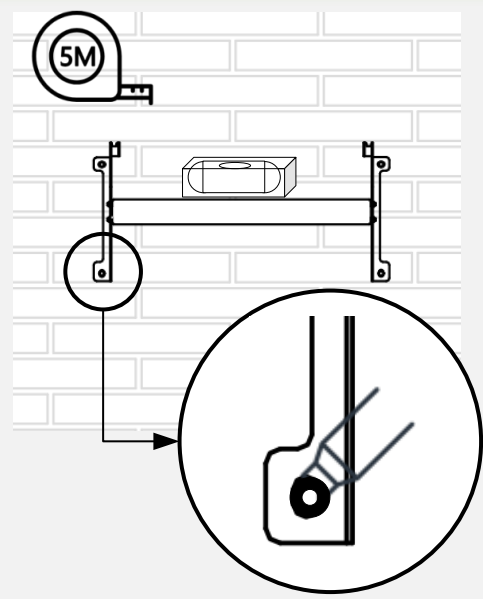


Marker: Punch marking.

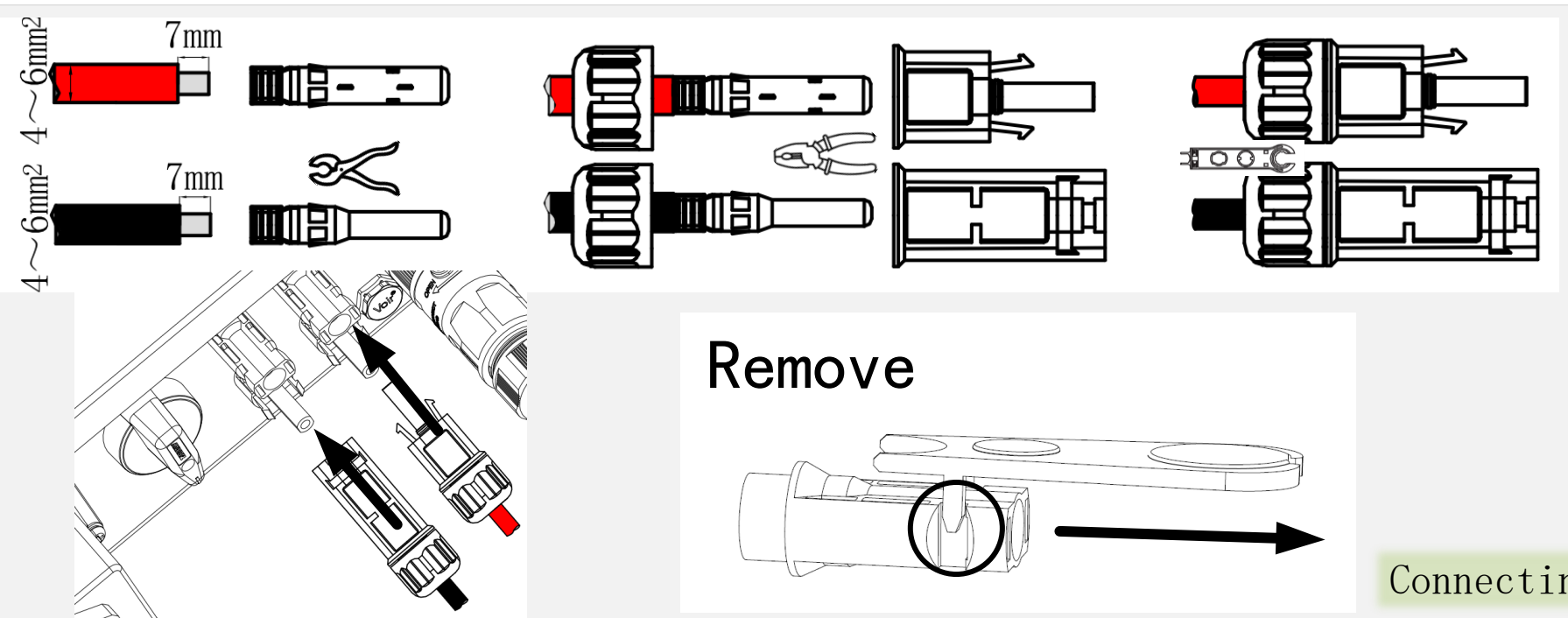
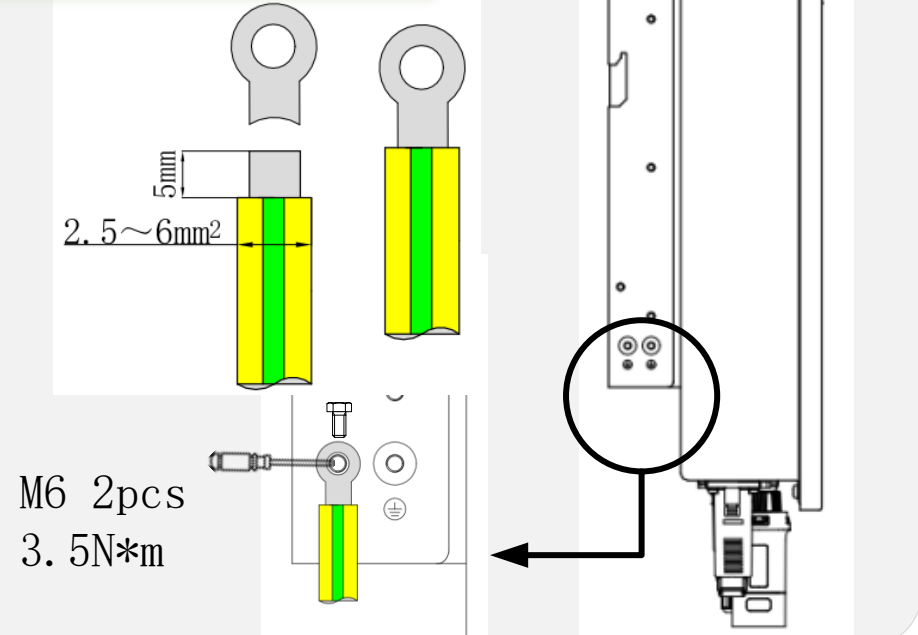


Tape measure: Measuring distances.

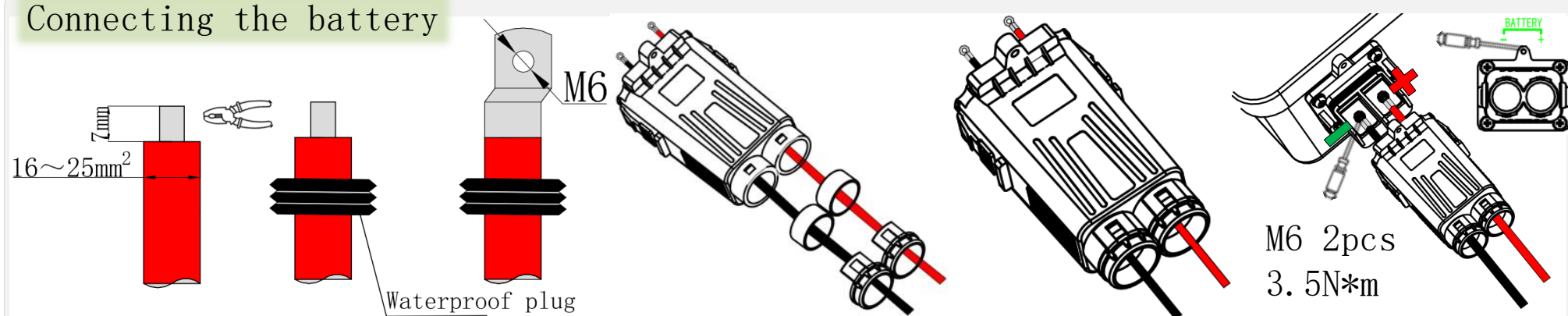
Installation of wall mounts and inverters



Inverter grounding

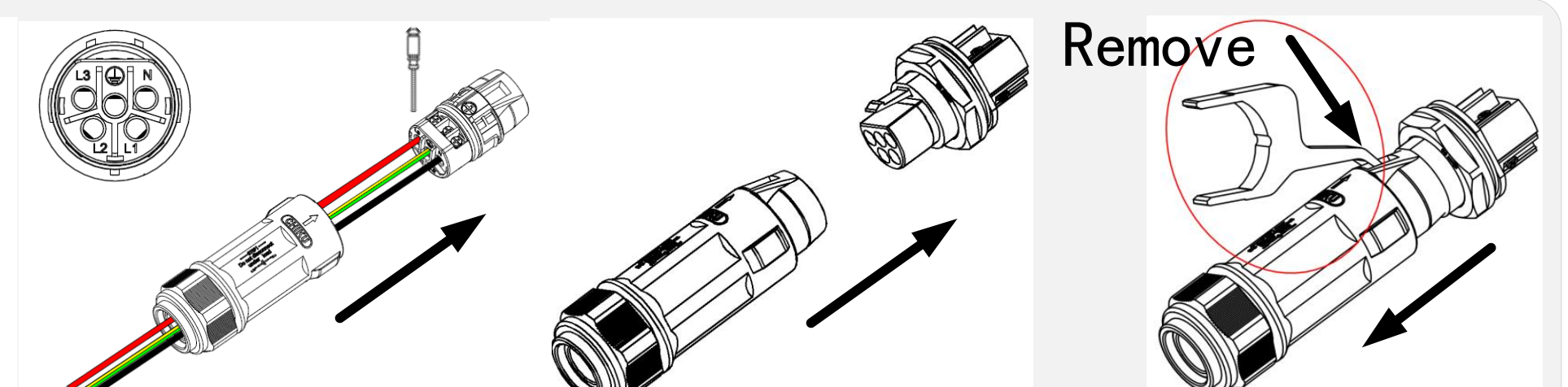
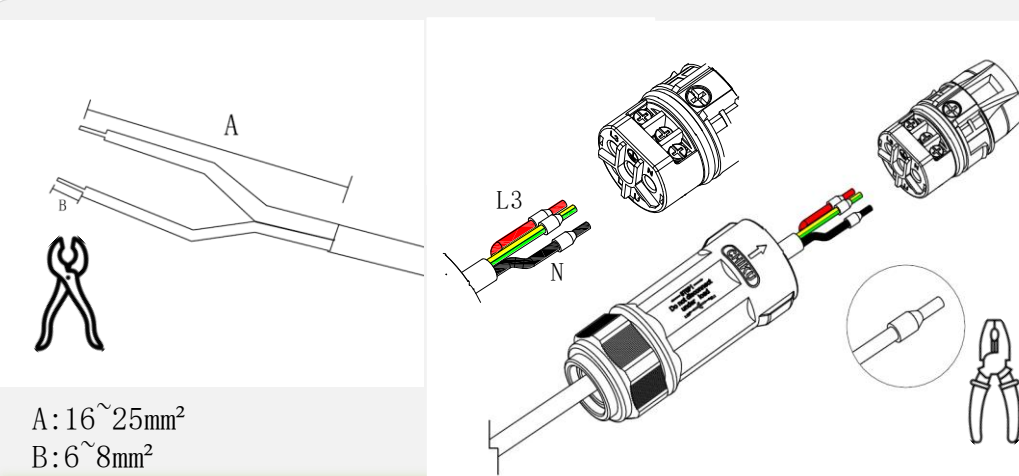


Connecting the battery

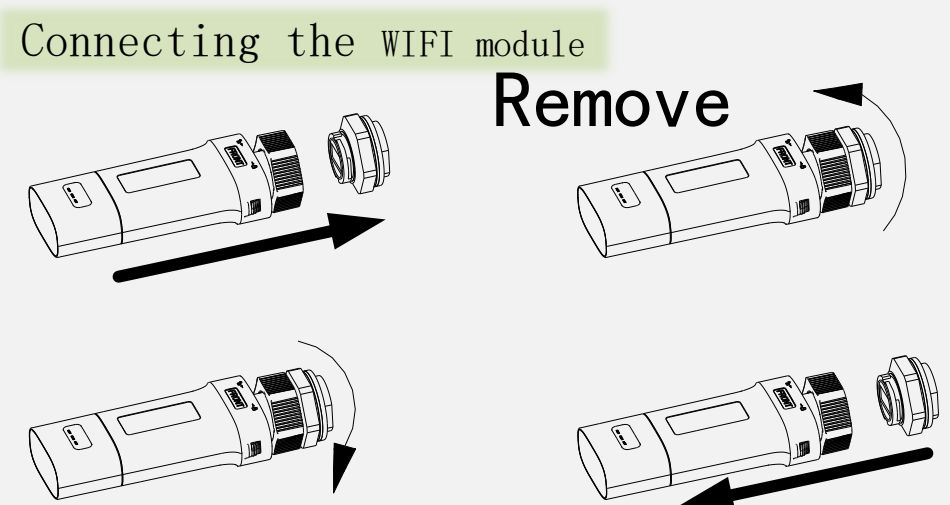


Avoid incorrect connection between positive and negative!!!

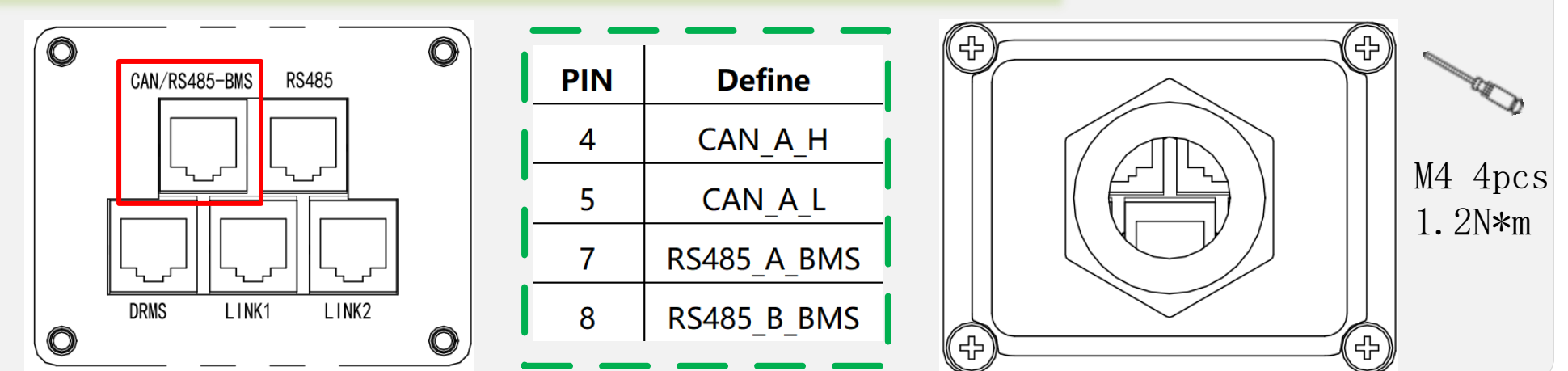
Connecting the AC Terminal



Connecting the WIFI module



Connecting the waterproof cover of communications port



ESS Link Download



Android



Google play



iOS

Download the user manual for details:
www.sinexcel-isuna.com/Download/