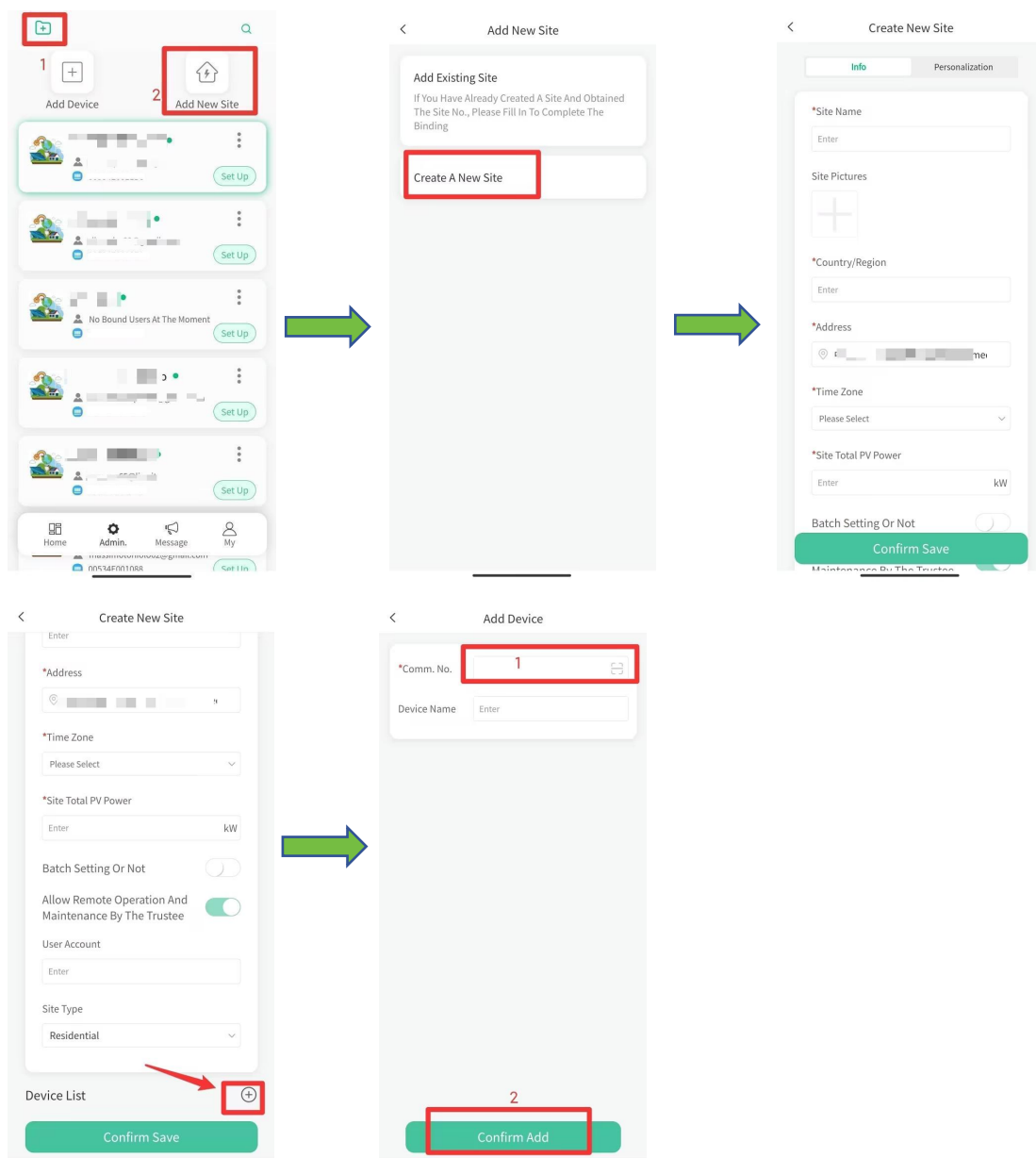


## Single phase hybrid inverter first installation guide

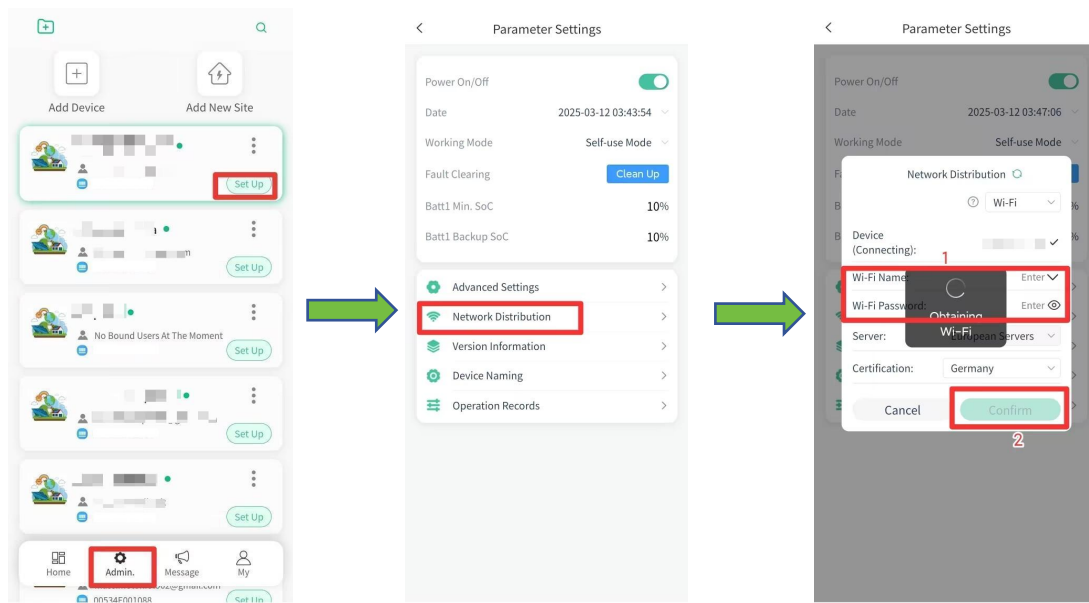
### Bind and assign devices.

1. After logging in the account and entering the Admin. page, the installer needs to create a new site first, and then scan the QR code or manually enter the PN code on the WiFi Stick to bind the device to this site.

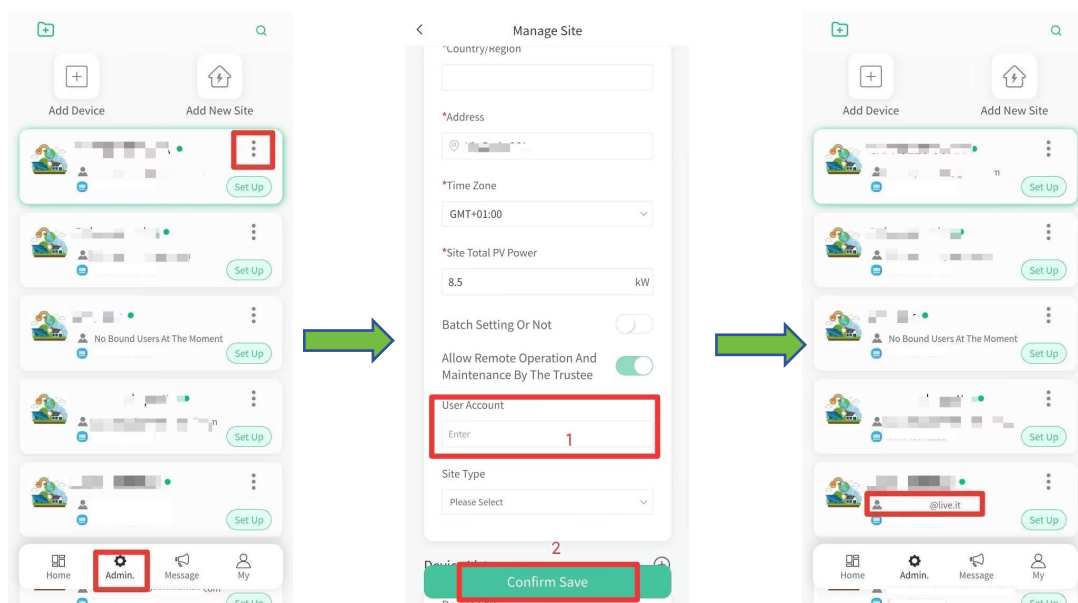


- After scanning the QR code or entering the PN code, the device will be directly bound. Then return to "Admin." -> "Set Up" -> "Network Distribution" for distribution network.

Note: The connected WIFI or hotspot frequency band must be 2.4GHz.

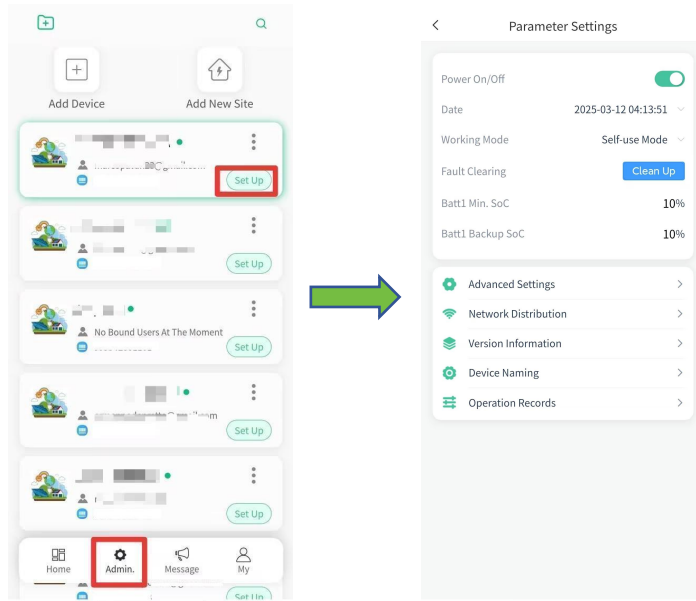


2. Select the inverter code to be assigned in “Admin.” and assign it to the end user’s account (one device is only allowed to be bound to one end user's account).



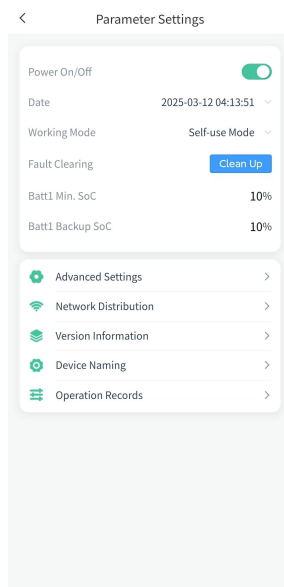
## Set parameters

“Admin.”-> “Set Up”, then click the corresponding device code to enter the “Parameters Settings”



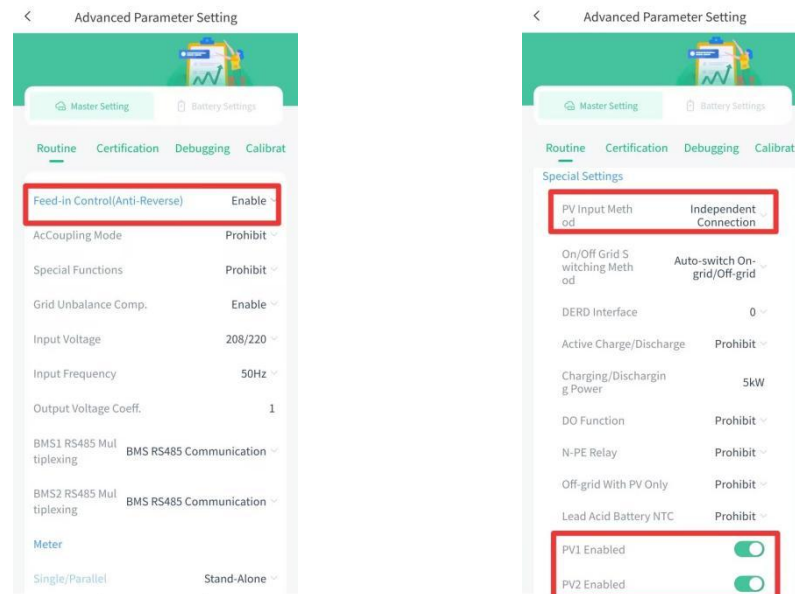
## 1. General Setting

- Calibrate the “Date” according to local time.
- Power on the power button.
- Select the required “Working Mode”.
- Set the correct “Batt Min. Soc” according to the actual use.
- Set the correct “Batt Backup Soc” according to the actual use.



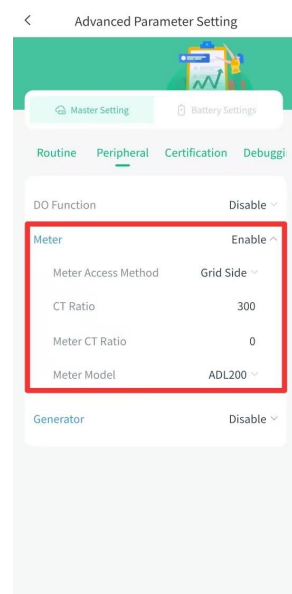
## 2. Advanced-Master Setting-Routine

- Set the “Feed-in Control(Anti-Reverse)” to **【 Enable 】** .If it is allowed to sell electric energy to the grid,it can be set **【 Prohibit 】** .
- Open the setting item of “Special Settings” folding,select the correct “PV Input Method” and turn on all “PV Enabled” switches.



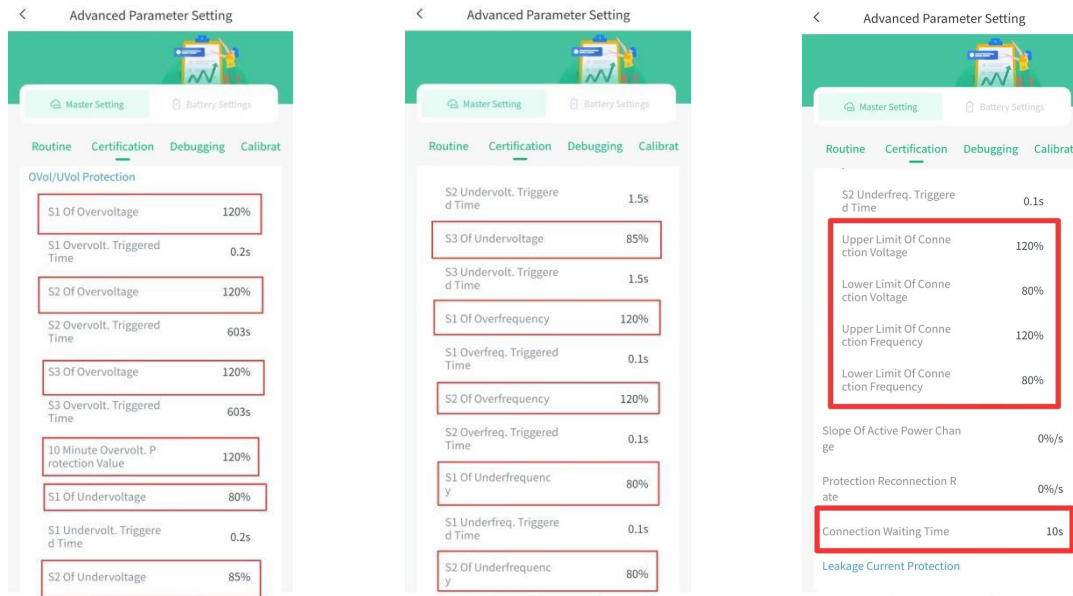
## 3. Advanced-Master Setting-Peripheral

- Open the setting item of “Meter” folding,and set the “Meter Access Enable” to **【 Enable 】** .According to the actual situation,select the correct “Meter Access Method” and “Meter Model”.



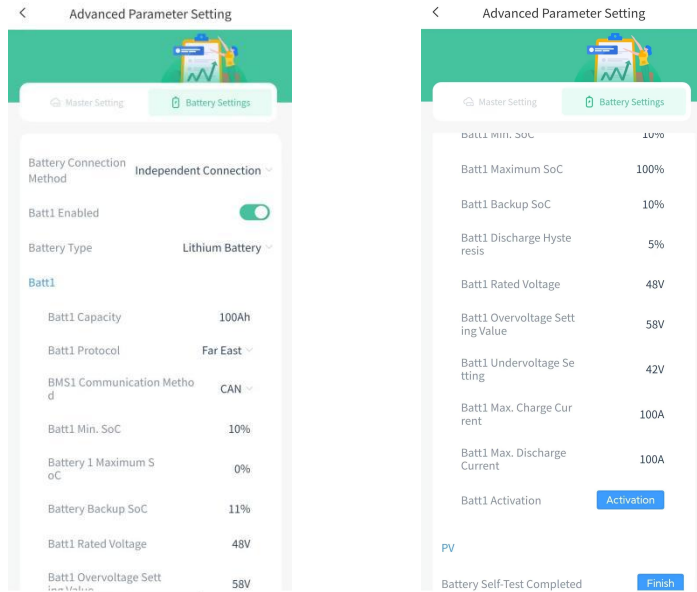
#### 4. Advanced-Master Setting-Certification

- Select the correct “Certification Country”.If the selected country is **【Italy】** ,the autotest entrance will appear.
- Open the setting item of “OVol/UVol Protection” folding,set the over-voltage/under-voltage/over-frequency/under-frequency range to be wider.(Please refer to the following pictures for specific setting values)



#### 5. Advanced-Battery Setting

- Select the correct “Battery Connection Method” according to the actual battery connection.
- Turn on the “Batt Enabled” switch.
- Select the correct “Battery Type”.
- Open the setting item of “Batt” folding,set the corresponding battery parameters according to the actual usage.



## Check the measured data

Click the house picture on the home page to enter the detailed parameter page of the inverter, and then click the icon in the upper right corner again to enter the "Measured Data". Then to check whether the grid voltage is correct and whether the meter and battery are online. Whether the inverter state is correct. If there is wrong data, please check whether the above settings are set correctly and wiring are correct.

