

Isuna T-TH host computer upgrade guide

catalogue

1.Preface	3
2.Preparation before upgrading	3
3.Upgrade steps	3
3.1 USB converter connection	3
3.2 Computer software installation	4
3.2 Software Upgrade	5

1.Preface

This upgrade guide is used for Isuna20000T to upgrade the host computer.

2.Preparation before upgrading

Tools required: computer, RS485-USB converter.

Software required: SmartPowerMonitor, serial port driver.

Firmware list:

Serial number	File Type	File Description
1	ARM	Isuna20000T_ARM_APP_V0B013.bin
2	DCDC	Isuna20000T_DCDC_APP_V5B000.bin
3	DCAC	Isuna20000T_DCAC_APP_V5B000.bin

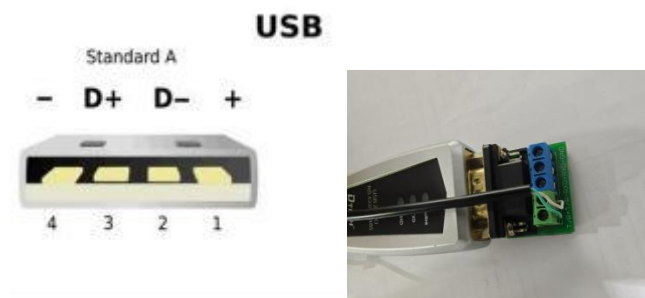
Before upgrading, download the software and upgrade firmware to your computer.

3.Upgrade steps

3.1 USB converter connection

1.connect the wires

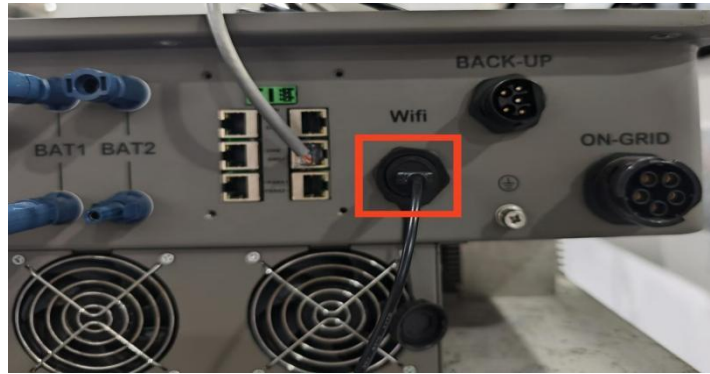
- Using standard network cable and RS485 tools:



The wiring table is as follows:

USB cable		RS485 device
3pin	A	T/R+
2pin	B	T/R-

- Put the network cable into the inverter RS485 / OP port.



Plug the 485 communication cable into the computer port, click sinexcel upper computer software, and click the home page, upper will identify a 485 port , baud need to change to 115200,check bit select no check, click it.

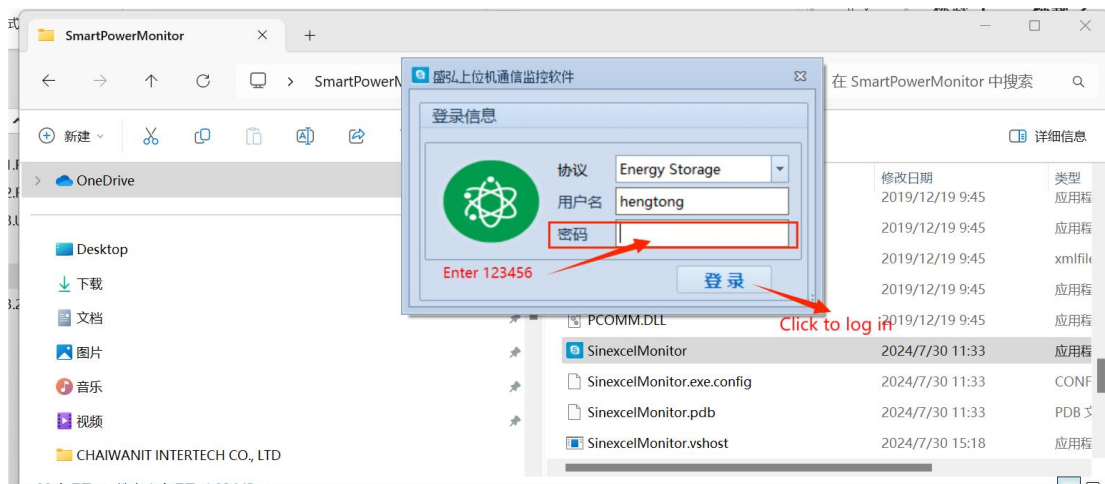
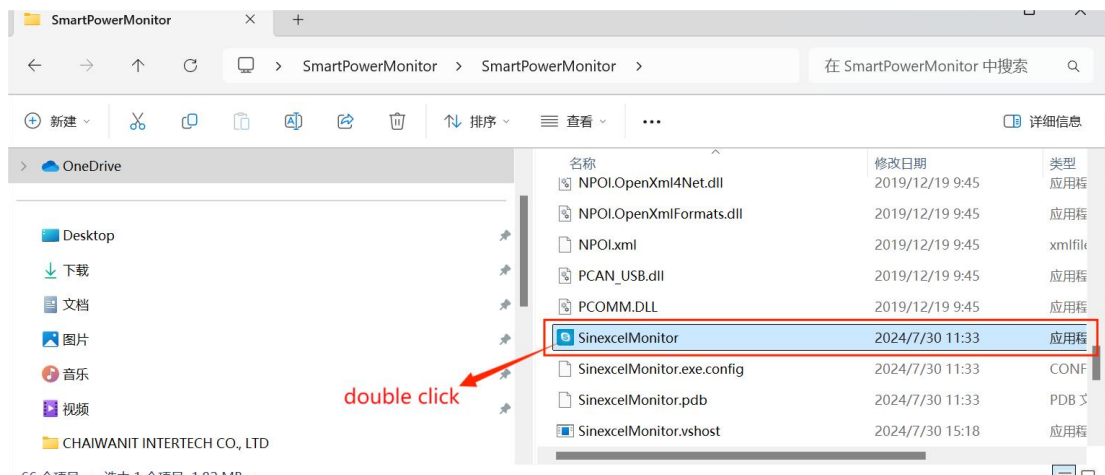
3.2 Computer software installation

1. If the computer cannot identify the USB port, you need to install the serial port driver software; if it can be identified, you do not need to install.



2.Unzip the attached file SmartPowerMonitor.zip to the desktop, open the folder, double-click SmartPowerMonitor, enter the password 123456 in the pop-up box, and click Login





3.3 Software Upgrade

1. Power on the inverter (connect to the grid or battery). Wait for the inverter LCD screen to light up
2. Check whether the settings are as shown below (the COM port depends on the USB port connected to the computer, Check in the device manager of your computer). Click Open after checking



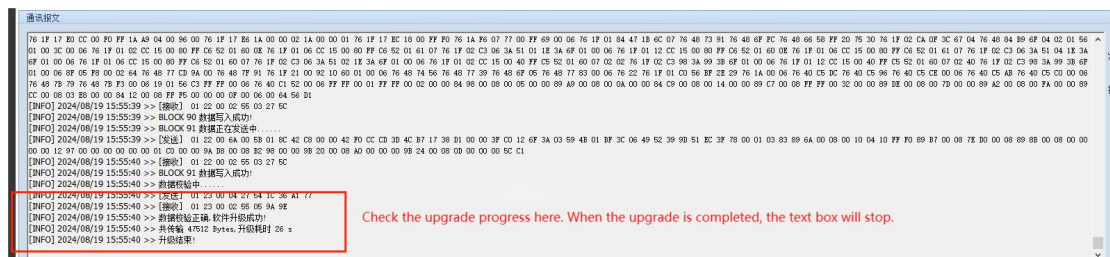
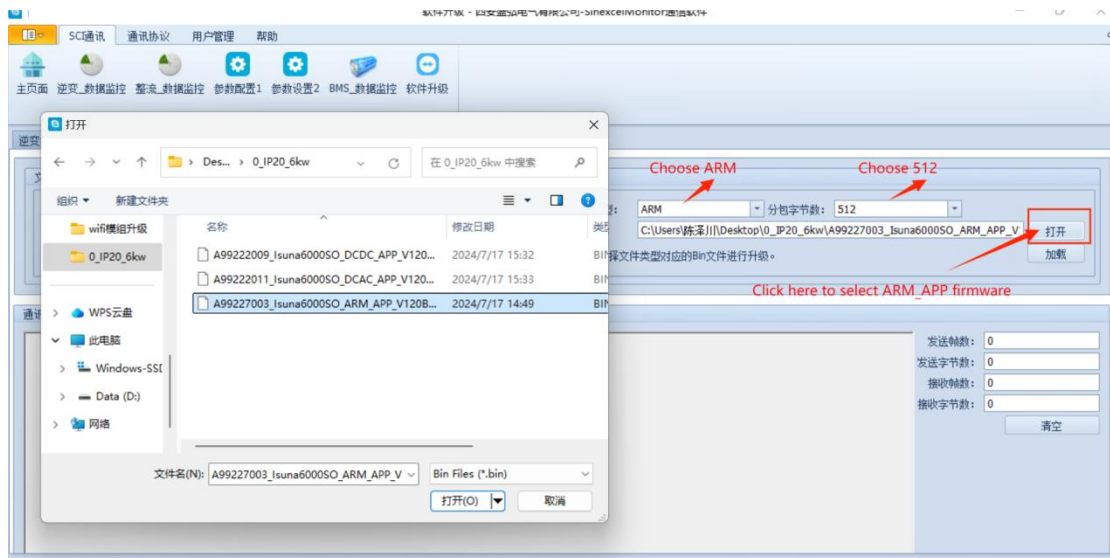
3. If the connection is successful, click the position shown in the figure below. The inverter operation status will be displayed; if not, you need to check whether the above steps are correct.



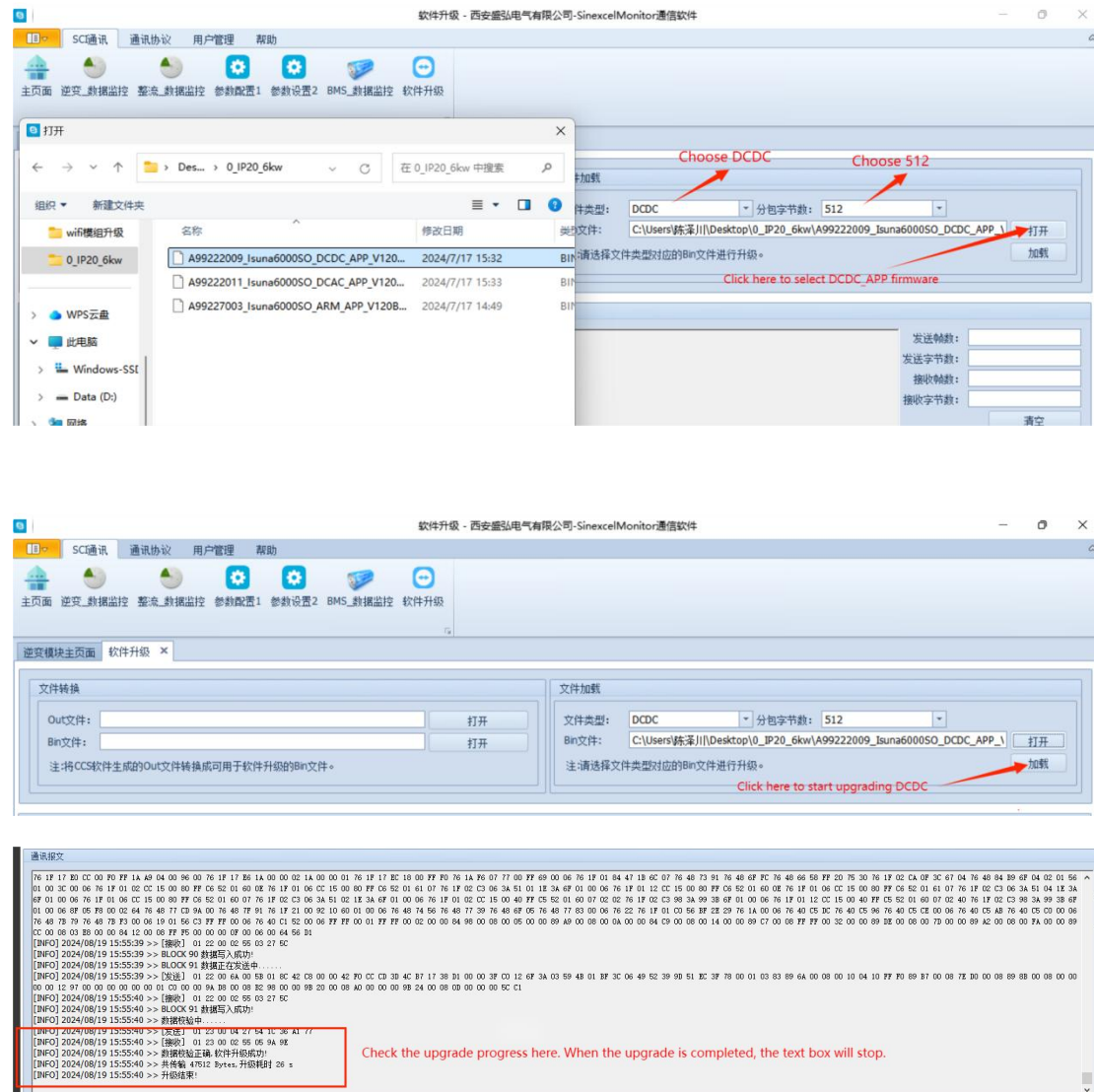
4. Click the location shown in the figure below to upgrade the software



5. Follow the steps shown in the figure below to upgrade the ARM firmware



6. Follow the steps shown in the figure below to upgrade the DCDC firmware.



7. Follow the steps shown in the figure below to upgrade the DCAC firmware

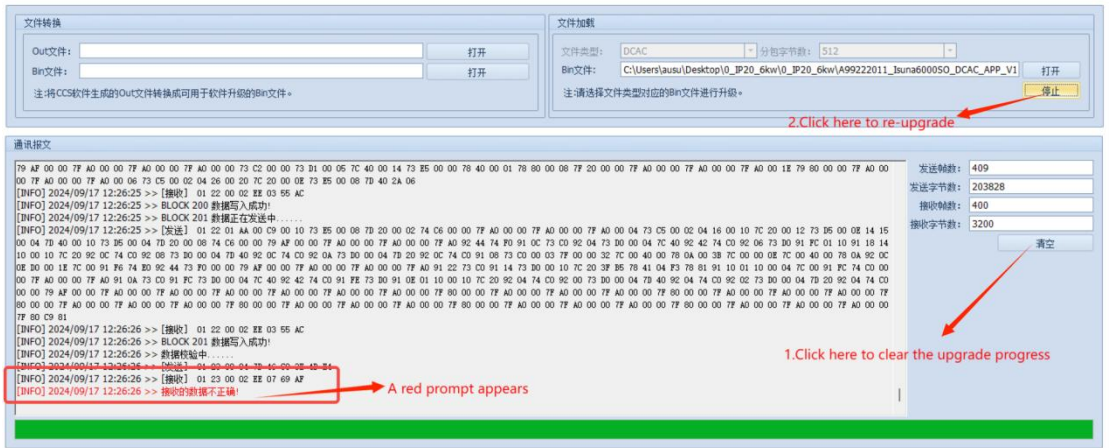
The figure consists of three screenshots from the SinexcelMonitor software, illustrating the steps to upgrade DCAC firmware.

Top Screenshot: Shows the '打开' (Open) file dialog box. The file list contains three files: 'A99222009_Isuna6000SO_DCDC_APP_V120...', 'A99222011_Isuna6000SO_DCAC_APP_V120...' (selected), and 'A99222003_Isuna6000SO_ARM_APP_V120B...'. The '文件类型' (File type) is set to 'DCAC' and '分包字节数' (Subpackage byte count) is set to '512'. The file path is 'C:\Users\陈泽川\Desktop\0_IP20_6kw\A99222011_Isuna6000SO_DCAC_APP_V120...'. Red arrows point to 'Choose DCAC' and 'Choose 512'. A red arrow points to the '打开' (Open) button with the text 'Click here to select DCAC_APP firmware'.

Middle Screenshot: Shows the '文件加载' (File loading) section. The '文件类型' (File type) is 'DCAC' and '分包字节数' (Subpackage byte count) is '512'. The file path is 'C:\Users\陈泽川\Desktop\0_IP20_6kw\A99222011_Isuna6000SO_DCAC_APP_V120...'. The '加载' (Load) button is highlighted with a red arrow and the text 'Click here to start upgrading DCAC'.

Bottom Screenshot: Shows the '通讯报文' (Communication message) window. The text box displays the upgrade progress. A red box highlights the final status: '升级成功!' (Upgrade successful!). The text 'Check the upgrade progress here. When the upgrade is completed, the text box will stop.' is written below the text box.

8.If the following situations occur during the upgrade process, re-upgrade as shown in the figure below



9.After the upgrade is complete, return to the main interface to check whether the upgrade is successful.

